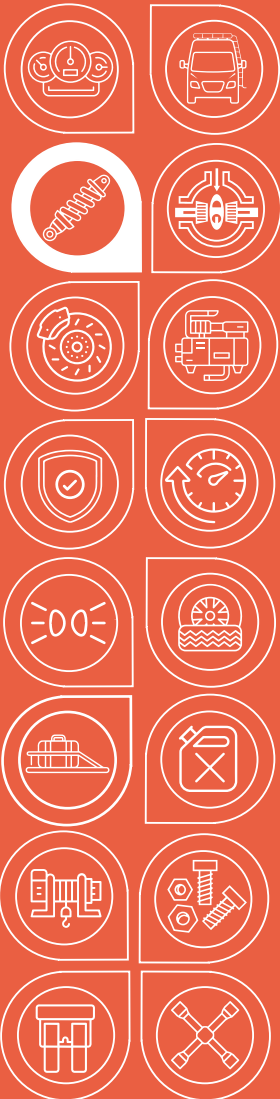




**AGILE
OFFROAD**
SMARTER THAN DIRT



Installation Guide

AUXILIARY FRONT SHOCK MOUNT KIT
FOR SPRINTER 4X4 & AWD BY
AGILE OFFROAD

AOR11123

ENHANCED SUSPENSION PERFORMANCE FOR SPRINTER 4X4/AWD WITH AUXILIARY SHOCK SYSTEM

AUXILIARY FRONT SHOCK MOUNT KIT FOR
SPRINTER 4X4 & AWD BY AGILE OFFROAD



This auxiliary bracket system allows you to run a second set of shocks on your Sprinter 4X4 or AWD, enhancing suspension performance in demanding conditions. Constructed from powder-coated steel for strength and corrosion resistance, the kit uses factory mounting points for a secure fit. Designed for shocks with 4.5" of travel (16" extended, 11.5" compressed), this kit improves ride quality, control, and durability when paired with the right shock setup. Note: This kit will NOT fit vans with the factory Mercedes-Benz rear-mounted AC unit.

SKU

AOR11123

PARTS INCLUDED

Refer to Page 3

TOOLS NEEDED

Panel Clip Removal Tool

10mm Socket

11mm Wrench

15mm Socket/Wrench

16mm Socket/Wrench

Vise Grips

3/4" Socket/Wrench

3/8" Drill Bit

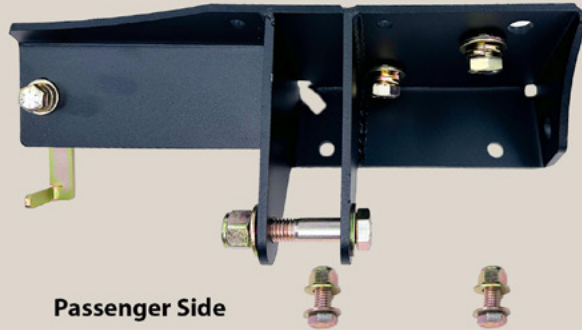
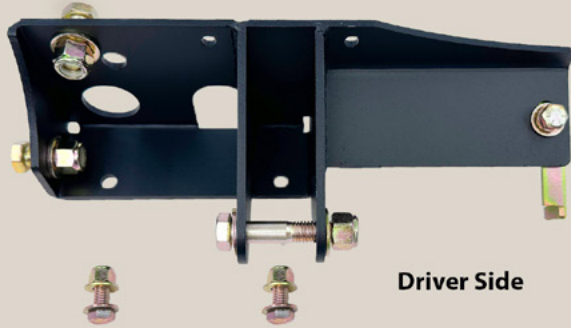
Utility Knife

Tin Shears

INSTALLATION TIME

2-3 Hours

INSTALLATION GUIDE



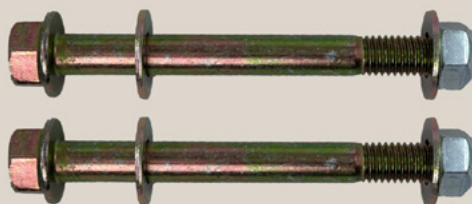
Upper Auxiliary Shock Brackets:

- 6 x 3/8" Bolt
- 10 x 3/8" Washer
- 2 x 3/8" Lock Washer
- 4 x 3/8" Nyloc Nut
- 2 x 3/8" Flag Nut
- 4 x 1/2" x 1.25" Bolt
- 2 x 1/2" x 2.75" Bolt
- 10 x 1/2" Washer
- 2 x 1/2" Lock Washer
- 4 x 1/2" Nyloc Nut
- 1 x 1/2" Double Nut Plate



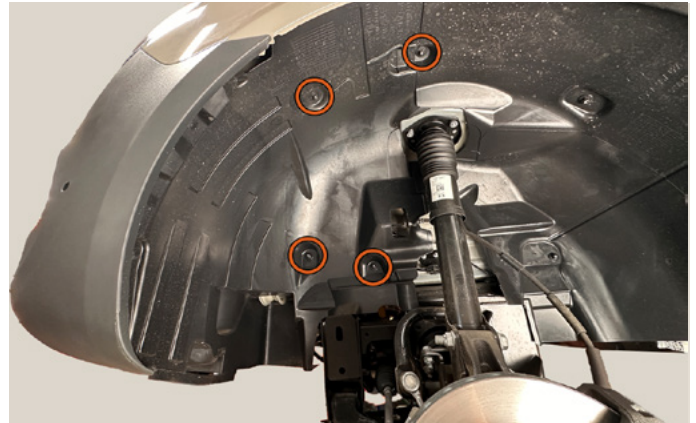
Lower Auxiliary Shock Brackets:

- 8 x M10 Flange Bolt
- 2 x 1/2" x 5" Bolt
- 4 x 1/2" Washer
- 2 x 1/2" Lock Nut

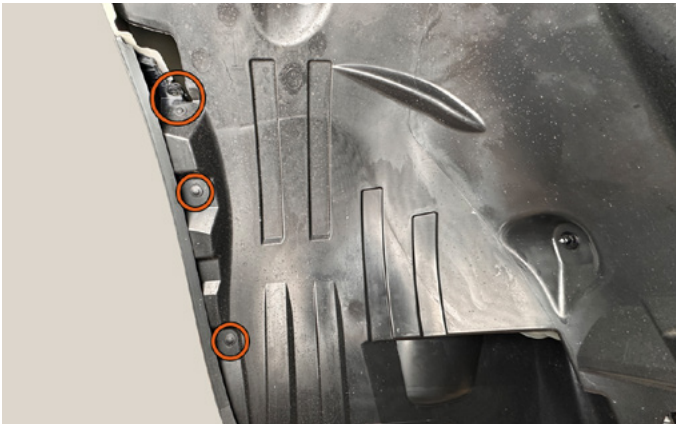


INSTALLATION GUIDE

LIFT AND SUPPORT THE VEHICLE USING STANDARD SAFETY PROCEDURES AND MERCEDES RECOMMENDED LIFTING POINTS.



1. Remove the front wheels. Use a 10mm socket to remove the four front inner wheel well liner nuts.



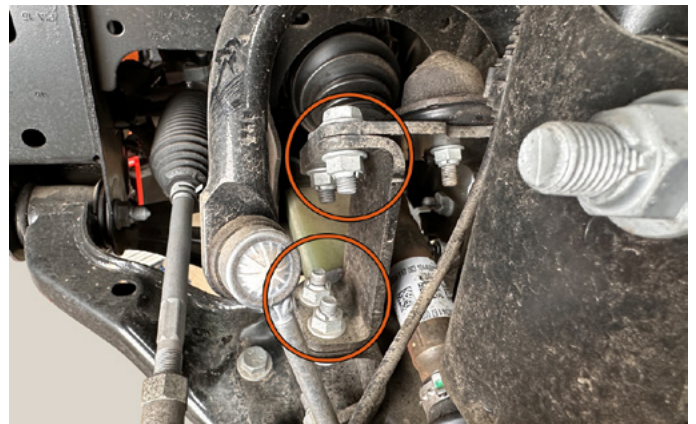
2. Use a panel clip removal tool to remove the three front inner wheel well liner clips.



3. Use a panel clip removal tool to remove the two front lower inner wheel well liner clips.



4. Remove the front inner wheel well liner.

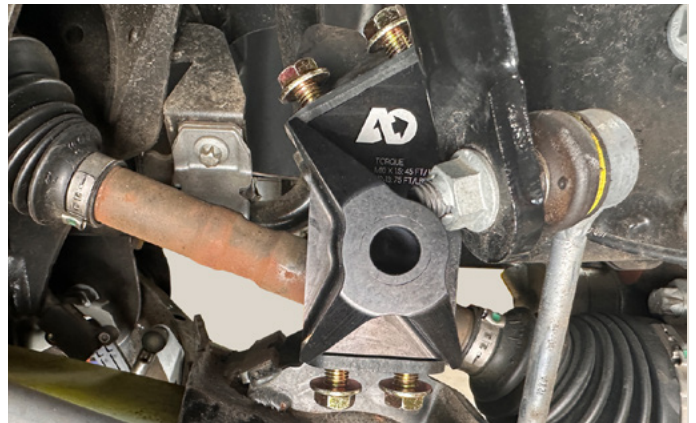


5. Use a 16mm socket/wrench to remove the four bump support bracket nuts and bolts. **Note: 2015-22 Sprinters only have three bolts.**

INSTALLATION GUIDE



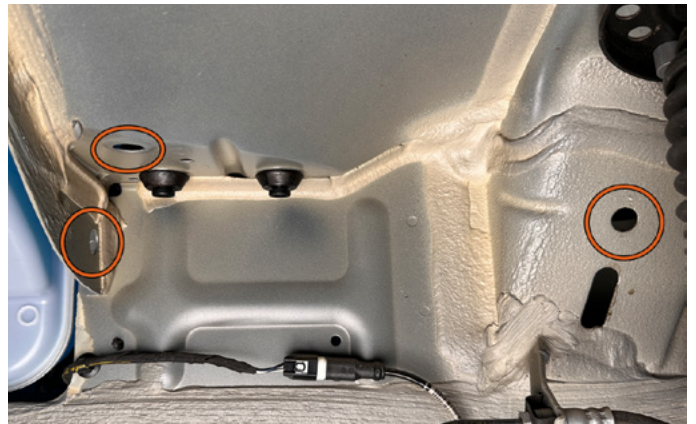
6. Remove the support bracket and clean the mounting surfaces as necessary.



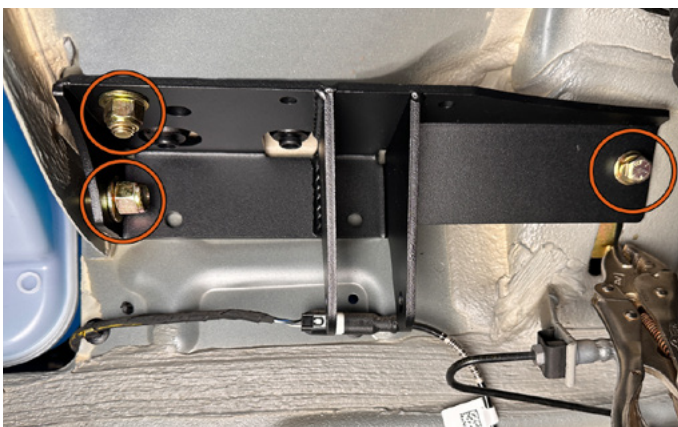
7. Use a 15mm socket/wrench to install the side specific lower auxiliary shock bracket using four of the supplied M10 flange bolts. Apply a few drops of the supplied blue thread locker to each bolt. **Note: 2015-22 Sprinter only require three bolts.**



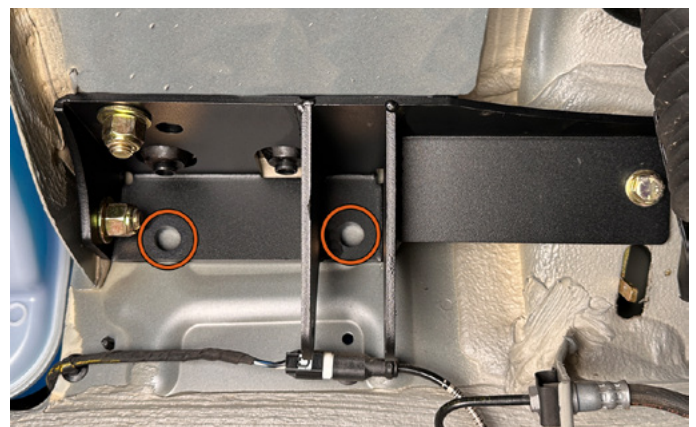
8. Fully tighten all four bolts. Torque to 45 ft lbs. Repeat steps 1-8 on the opposite side.



9. DRIVER SIDE UPPER: Locate the three holes as shown.

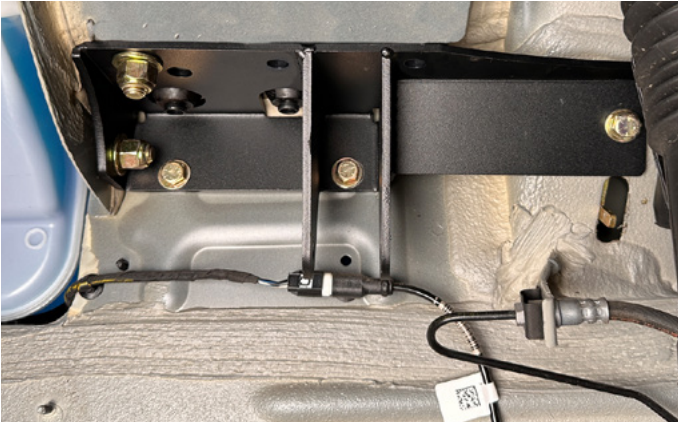


10. Use two of the supplied 1/2" bolts, four 1/2" washers, and 1/2" nyloc nuts at the front of the bracket as shown. The top front bolt and washer must be installed from inside the engine compartment and will require the help of an assistant. Use one of the supplied 3/8" bolts, 3/8" washer, 3/8" lock washer, and flag nut at the rear of bracket. Insert one of the supplied flag nuts into the slotted hole. Use a set of small vise grips to hold the flag nut while installing the bolt and hardware

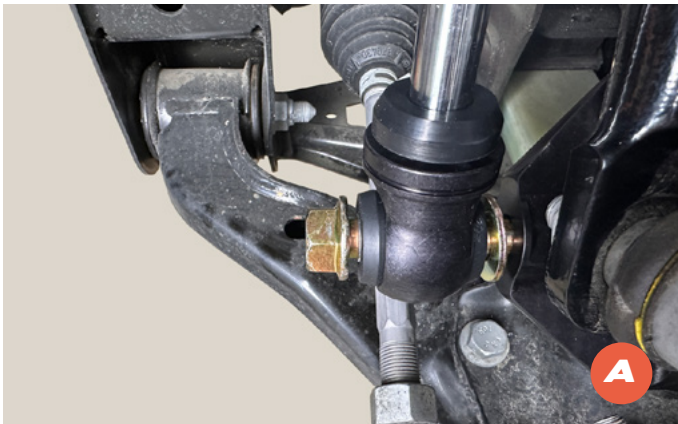


11. Fully tighten the front upper 1/2" nut and bolt first then the rear 3/8" bolt while making sure the bracket sits flat to the sheet metal. Fully tighten the remaining bolt. Torque 1/2" hardware to 75 ft lbs and 3/8" hardware to 40 ft lbs. Use the two lower bracket holes as guides to drill two 3/8" holes through sheet metal. **Note: Before drilling any holes, make sure the back side is clear of any wires, hoses, or components.**

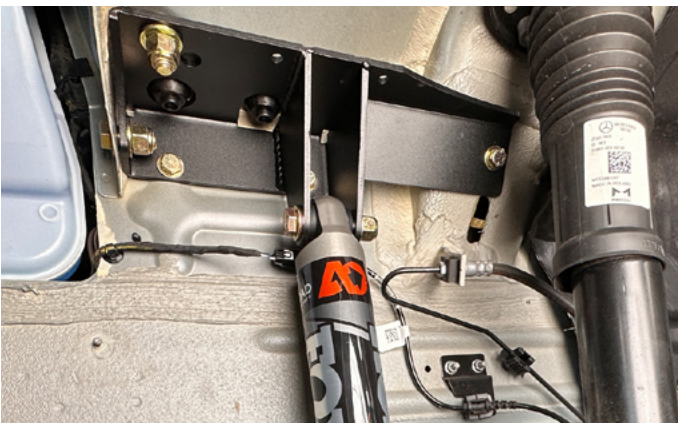
INSTALLATION GUIDE



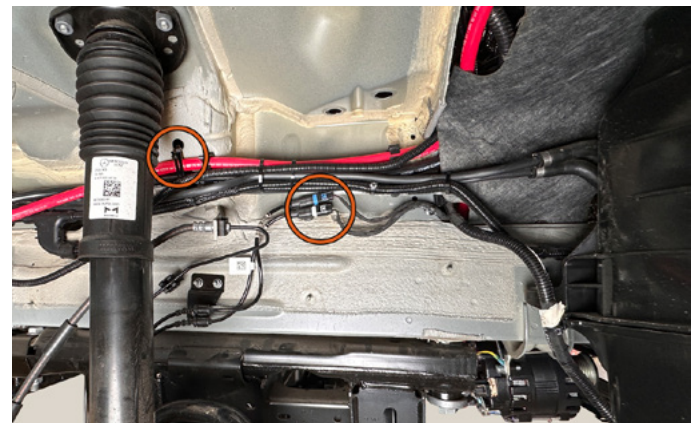
12. Install two to the supplied $\frac{3}{8}$ " bolts, four washers, and nyloc nuts. Torque to 40ft lbs.



13 A/B. Use one of the supplied $\frac{1}{2}$ "x 5" bolts, two washers, and lock nut to install the shock to the lower auxiliary shock mount. One washer must be installed between the shock and the lower mount as shown. **13 B.** Install the second washer at the inside of lower auxiliary bracket then install the lock nut. Torque to 75 ft lbs. **Note: For proper lock nut engagement, one to two threads must be exposed past lock nut.**

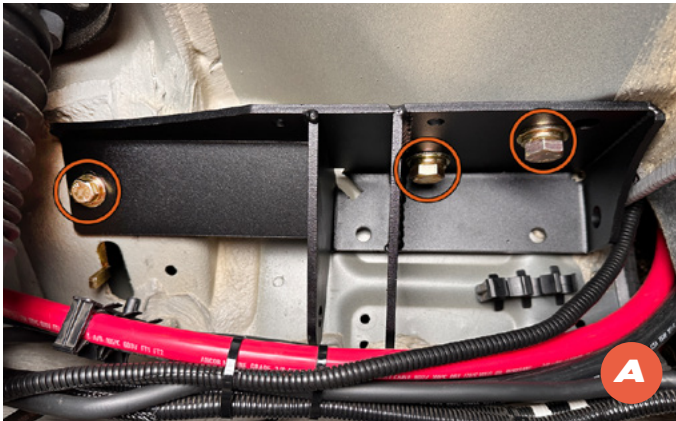


14. Use one of the supplied $\frac{1}{2}$ "x 1.25" bolts, two washers, and nyloc nuts to install the shock to the upper auxiliary shock bracket. Torque to 75 ft lbs.

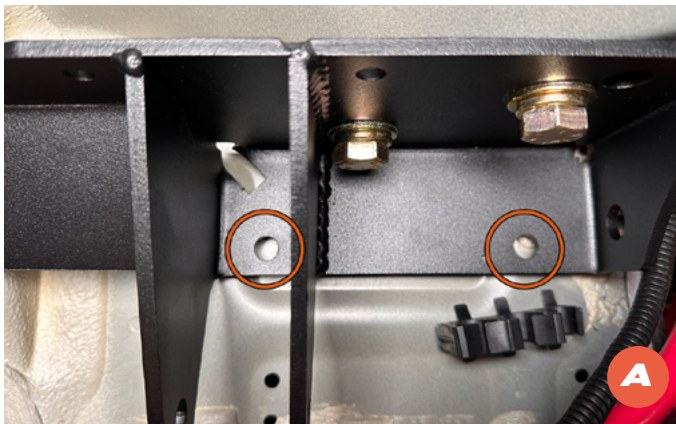


15. PASSENGER SIDE UPPER: Unclip the factory DEF lines, sensor harnesses, and any aftermarket accessory lines as necessary.

INSTALLATION GUIDE



16 A/B. Use two of the supplied $\frac{1}{2}$ " bolts, two $\frac{1}{2}$ " washers, two lock washers, and the $\frac{1}{2}$ " double nut plate at the front of the bracket as shown. The two top front bolts and washers must be installed from the bracket side with the double nut plate in the engine compartment and will require the help of an assistant. Use one of the supplied $\frac{3}{8}$ " bolts, $\frac{3}{8}$ " washer, $\frac{3}{8}$ " lock washer, and flag nut at the rear of bracket. Insert one of the supplied flag nuts into the slotted hole. Use a set of small vise grips to hold the flag nut while installing the bolt and hardware.

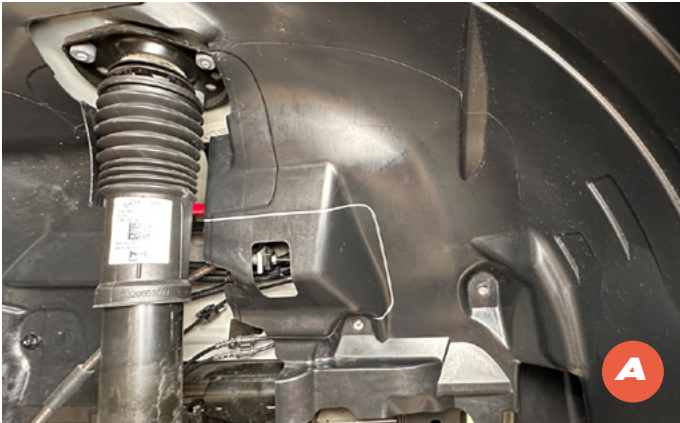


17 A/B. Fully tighten the front upper $\frac{1}{2}$ " bolts first then the rear $\frac{3}{8}$ " bolt while making sure the bracket sits flat to the sheet metal. Torque $\frac{1}{2}$ " hardware to 75 ft lbs and $\frac{3}{8}$ " hardware to 40 ft lbs. Use the two lower bracket holes as guides to drill two $\frac{3}{8}$ " holes through sheet metal.
Note: Before drilling any holes, make sure the back side is clear of any wires, hoses, or components.



18 A/B. Use wire ties to re-install the DEF lines, sensor harnesses, and any aftermarket accessory lines as necessary.
Note: Make sure all lines and wires are clear from any moving components. Some applications may require the lines and wires to be routed behind the factory brake lines. Use an 11mm wrench to remove and replace brake line then bleed brake system using Mercedes recommended procedures.

INSTALLATION GUIDE

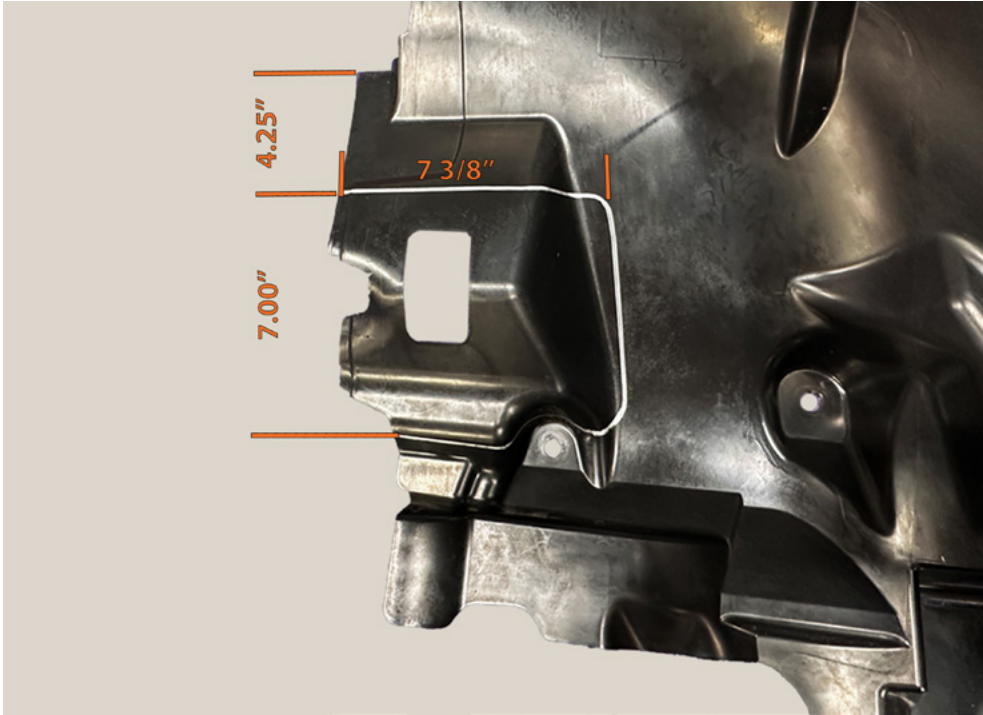


19 A/B. Use the dimensions on page 9 to cut the front inner wheel well liners. Use a utility knife and/or tin shears to make the cuts.



20. Use the factory hardware to re-install the two inner wheel well liner.

LINER CUT INSTRUCTIONS.





**AGILE
OFFROAD**
SMARTER THAN DIRT



Interior



Exterior



Suspension



Air Locker &
Drivetrain



Steering &
Brakes



Air
Compressors



Armor &
Protection



Performance



Lighting



Wheels &
Tires



Storage &
Racks



Water &
Fuel Tanks



Winches &
Recovery



Replacement
Parts &
Accessories



Electrical



Tools

