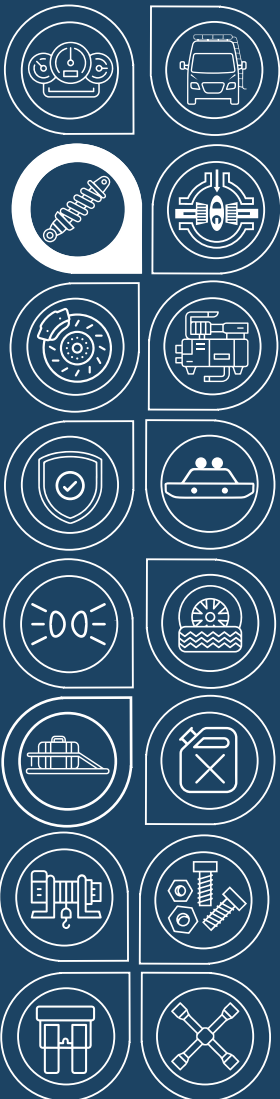




**AGILE  
OFFROAD**  
SMARTER THAN DIRT



## INSTALLATION GUIDE

Apex airLYNX Rear Adjustable Disconnect for  
Ineos Grenadier by Agile Offroad

AO-S4G-X

# INSTALLATION GUIDE

## FINE-TUNE YOUR GRENADIER'S SUSPENSION FOR OFF-ROAD & ON-ROAD PERFORMANCE

Apex airLYNX Rear Adjustable Disconnect for Ineos Grenadier by Agile Offroad



The Apex airLYNX Rear Adjustable Disconnect enhances your Ineos Grenadier's suspension performance with an adjustable pressure range of 0-150 PSI. This system lets you soften the sway bar for greater articulation off-road or increase pressure for on-road stability. For highway driving, a recommended pressure of 150-300 PSI ensures optimal control, while off-road pressure can be set anywhere from to match your terrain and driving style. A Fox shock pump is included for precise adjustments.

### SKU

AO-S4G-2

### PARTS INCLUDED

2 x airLynx w/Mounting Hardware

1 x Template Sheet

1 x FOX AIR Pump

### TOOL NEEDED

T40 Torx Bit

T45 Torx Bit

19mm Wrench/Socket

Marker

Center Punch

15mm Wrench/Socket

2" Hole Saw and Drill

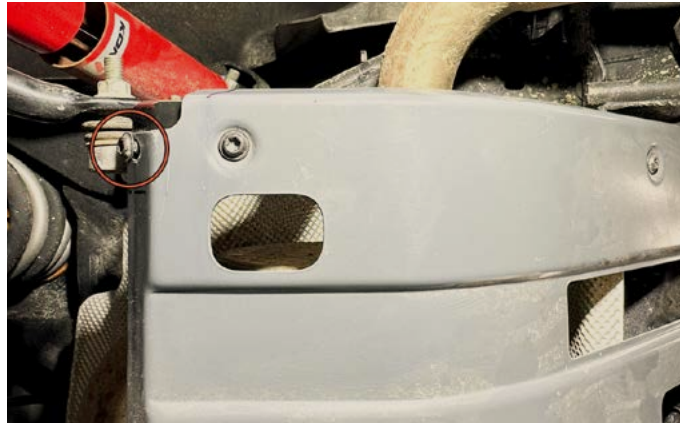
1 ½" Drum Sander

3" Disc Sander

### INSTALLATION TIME

2 - 3 Hours

# INSTALLATION GUIDE



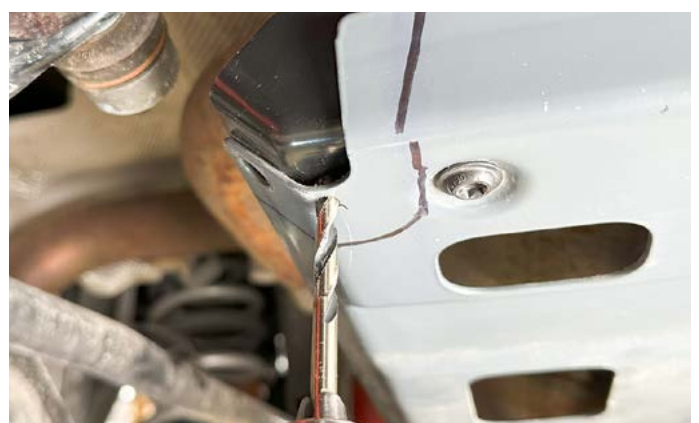
**1.** Use a T45 Torx bit to remove the front corner skid plate bolt.



**2 A/B.** Use a marker and the supplied template to mark the skid plate cut location as shown.



**3.** Use a center punch to mark the skid plate using the template as the guide.



**4.** Use a 1/8" drill bit to drill a hole through the skid plate only.

# INSTALLATION GUIDE



**5.** Use a T45 Torx bit to remove the skid plate to bracket bolt.



**6.** Use a 15mm wrench/socket to remove the two upper skid plate bracket bolts. Remove bracket.



**7 A/B.** Use a 2" hole saw to drill through the corner of the skid plate. Drill only enough to make the radius.



**8 A/B.** Use a cut-off wheel to cut from the back edge of the skid plate to the previous drilled radius.



# INSTALLATION GUIDE



**9.** Use a cut-off wheel to cut from the side edge of the skid plate to the previous drilled radius.



**10.** Use a drum sander and disc sander to smooth out the cut edges. Apply a coat of rust preventative paint.



**11 A/B.** Use the supplied template to mark the front lower portion of the skid plate bracket.

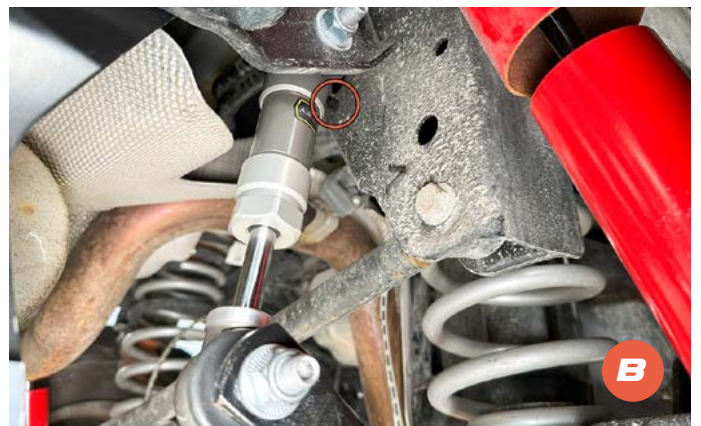


**12 A/B.** Use a cut-off wheel to cut the bracket at the marked line. Sand the cut edges and then apply a coat of preventative paint.

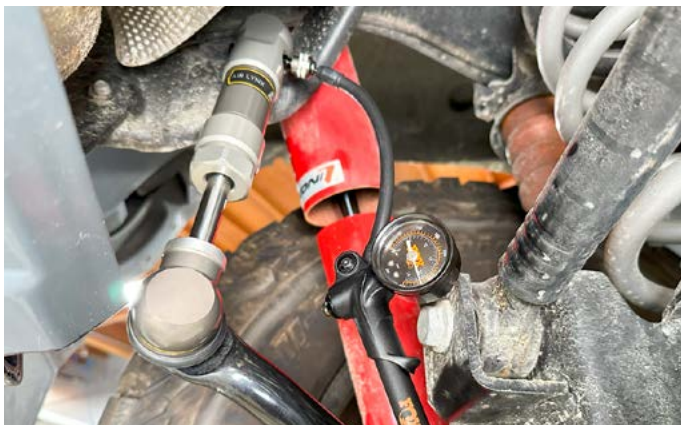
## INSTALLATION GUIDE



**13.** Re-install the skid plate bracket using the factory bolts.



**14 A/B.** Install the Apex airLYNX starting at the upper mount. Install the supplied washers with the concave side towards the mount. The airLYNX must be installed with the Schraeder fill port facing forward. Use a 19mm open wrench and a 1/4" Allen wrench to fully tighten the link nuts. To tighten, rotate wrench and nut while holding stud with the Allen wrench. Torque to 30 ft lbs.

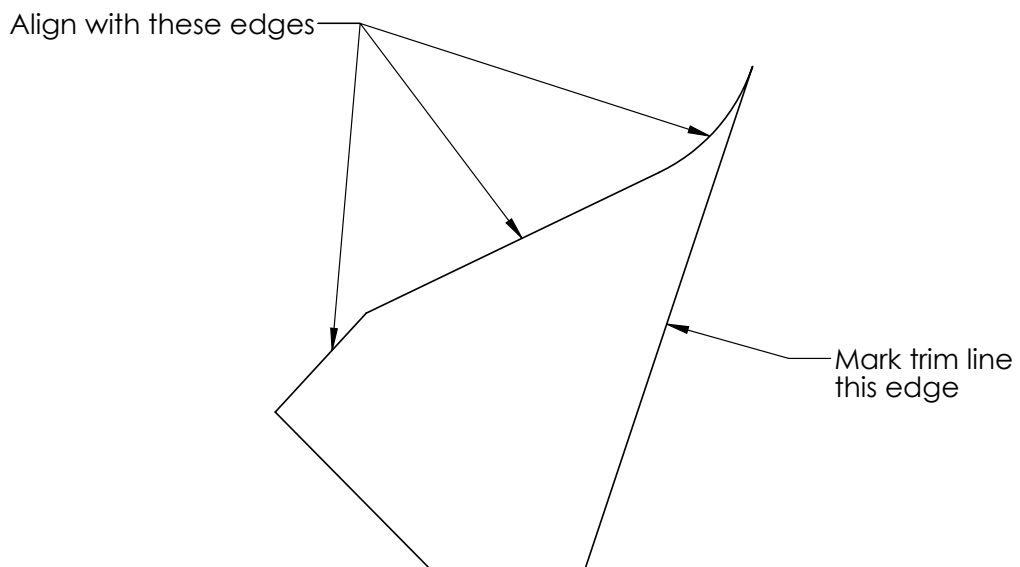
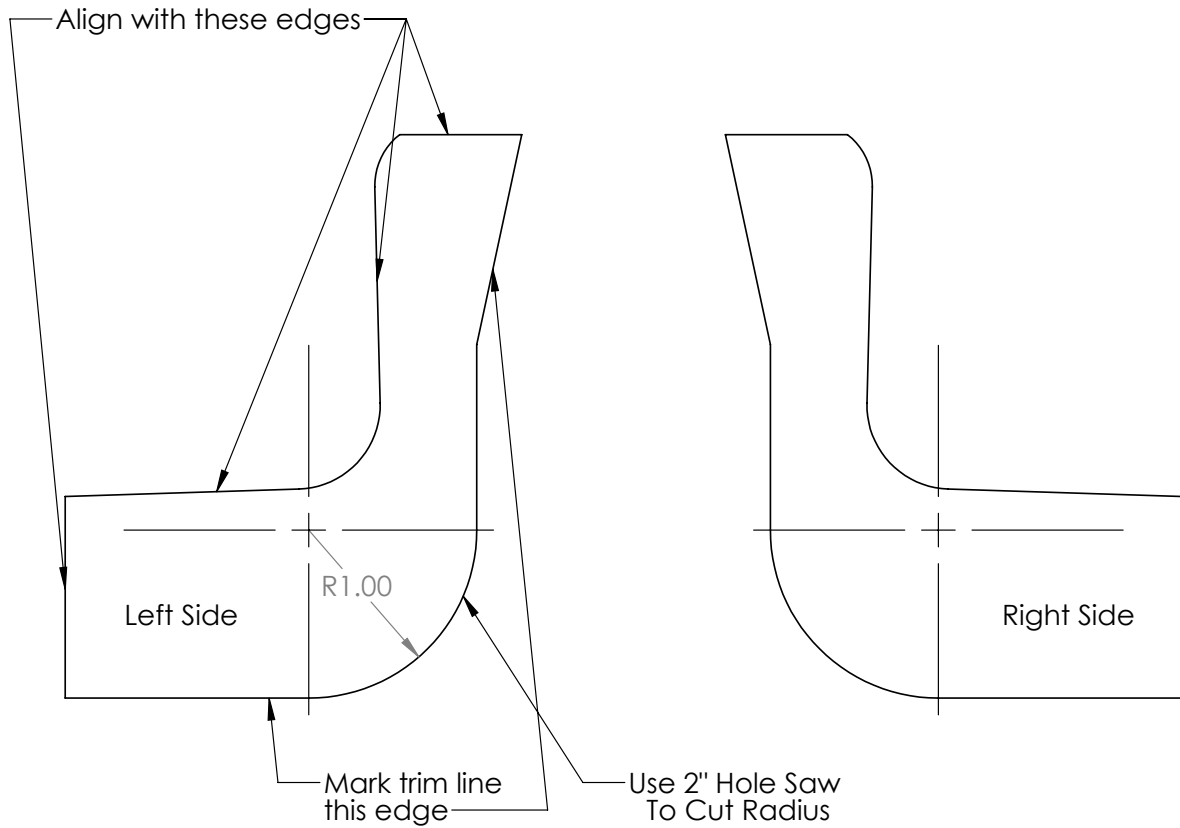


**15.** Repeat steps 1-14 on the opposite side. Inflate the airLYNX to the desired PSI using the Fox hand pump.

# INSTALLATION GUIDE

## APEX Rear AIRLYNX for Grenadier

## Rear Skid Plate Trim Templates

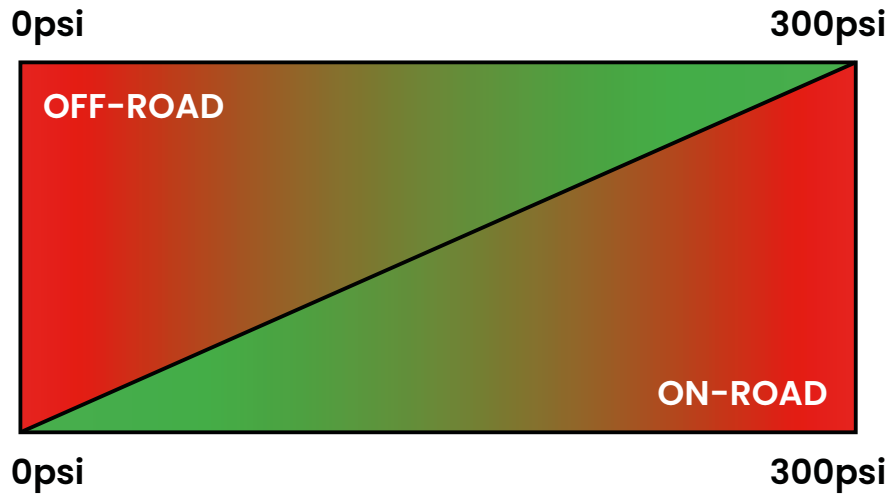


**RECOMMENDED DIRECTIONS TO USE:**

1- The airLYNX system is entirely adaptable, so each driver can choose the ideal pressure settings based on the situation.

2- Agile Offroad suggests the following airLYNX pressure guidelines:

- Lowest pressure: 0 psi
- Highest pressure: 300 psi
- For on-road conditions: maintain between 150 and 300 psi
- For off-road conditions: maintain between 0 and 150 psi







INEOS  
GRENADIER



AGILE  
OFFROAD



Interior



Exterior



Suspension



Air Locker &  
Drivetrain



Steering &  
Brakes



Air  
Compressors



Armor &  
Protection



Bumpers



Lighting



Wheels &  
Tires



Storage &  
Racks



Water &  
Fuel Tanks



Winches &  
Recovery



Replacement  
Parts &  
Accessories



Electrical



Tools



[agileoffroad.com](http://agileoffroad.com)



[info@agileoffroad.com](mailto:info@agileoffroad.com)



619-328-1297