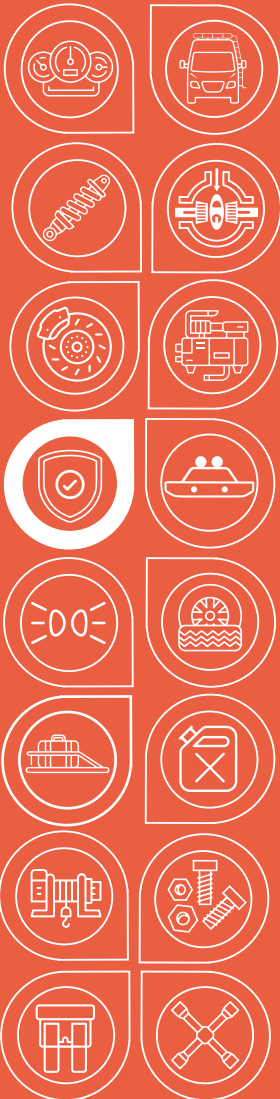




**AGILE
OFFROAD**
SMARTER THAN DIRT



Installation Guide

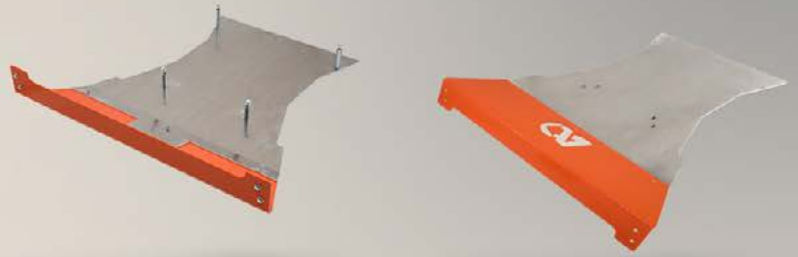
SKID PLATE FOR 2WD
FOR SPRINTER 2500 & 3500

AO-P1S-X1

INSTALLATION GUIDE

ULTIMATE PROTECTION FOR YOUR SPRINTER'S UNDERCARRIAGE

SKID PLATE FOR 2WD SPRINTER 2500 & 3500
BY AGILE OFFROAD



Off-road adventures and rugged terrains can be tough on your vehicle's vital components. The Agile Offroad Skid Plate for 2007 & newer two-wheel drive (2WD) Mercedes-Benz Sprinter 2500 & 3500 provides superior undercarriage protection for vital undercarriage components including the secondary alternator. Crafted from 3/16" 5052 aluminum for lightweight, durable underbody protection. Powder-coated in black or orange and bolt-on for easy installation.

Skid Plates for Sprinter 3500 2WD models include Override Brackets (SKU: AO-P5S-2) for proper installation.

SKU

AO-P1S-X1

PARTS INCLUDED

1 x Front Skid Plate

1 x Rear Skid Plate

2 x M8 x 80mm Flange Bolt

2 x M8 x 100mm Flange Bolt

2 x .75 x 2.25" Spacer

2 x .75 x 3.25" Spacer

4 x M8 x 1.5 U-Nuts

5 x M8 Flange Nut

9 x M8 x 25mm Flange Bolt

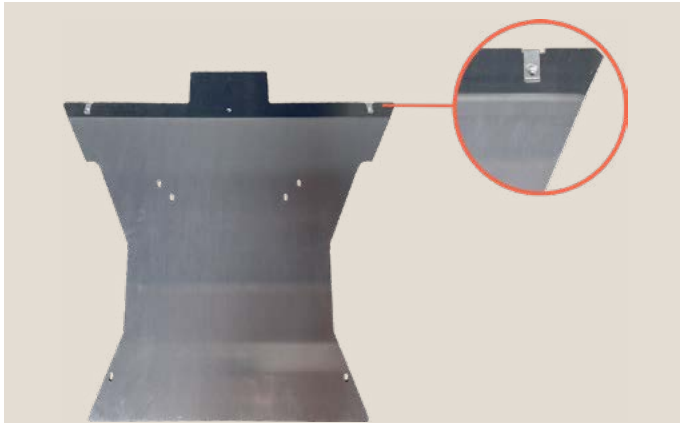
TOOL NEEDED

13mm Wrench/Socket

INSTALLATION TIME

30 Minutes - 1 Hour

INSTALLATION GUIDE



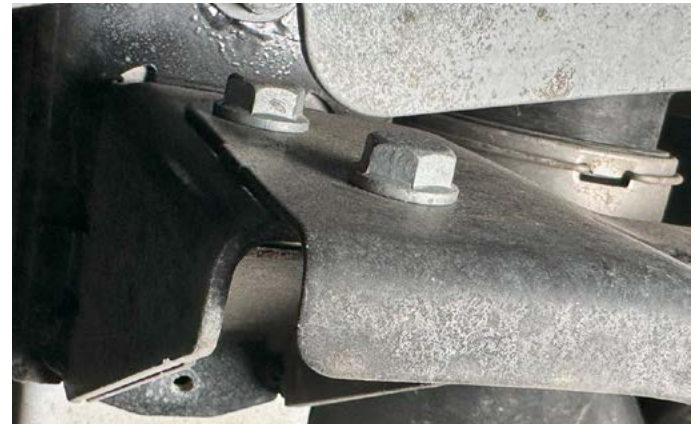
1. (2019+ 2wd Sprinters) Install two of the supplied u-nuts on to the rear skid plate slots as shown.



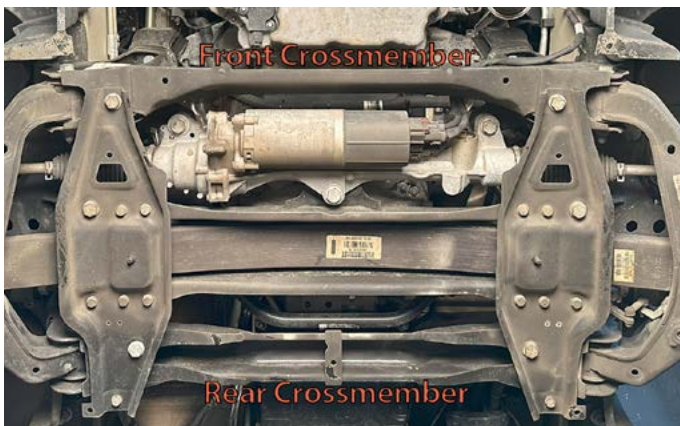
2. Assemble the front and rear skid plate using three of the supplied M8 flange bolts. Use one of the supplied M8 flange nuts for the center bolt. Hand tighten only.



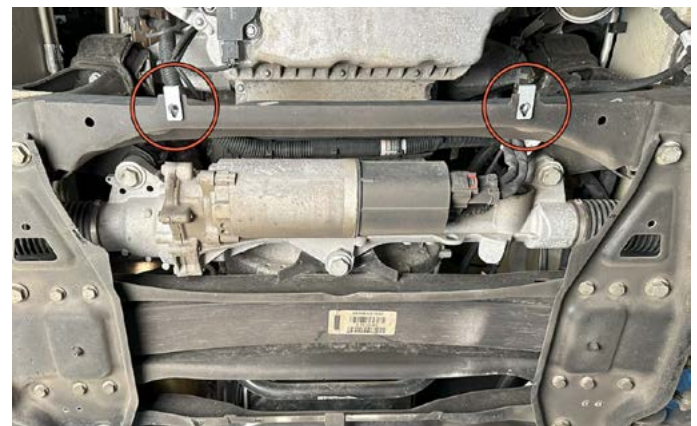
3. Locate the lower radiator support crossmember. The crossmember is attached by four bolts.



4. Use a 13mm wrench/socket to remove the four radiator support crossmember bolts.

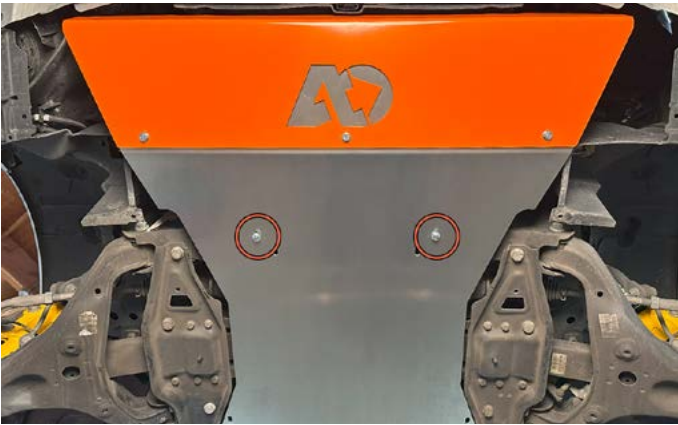


5. The Sprinter engine/suspension cradle is made up of a front and rear crossmember.



6. Install two of the supplied u-nuts to the front crossmember tabs as shown.

INSTALLATION GUIDE



7. Install the skid plate assembly to the front crossmember tabs using two of the supplied M8 flange bolts. Hand tighten only.



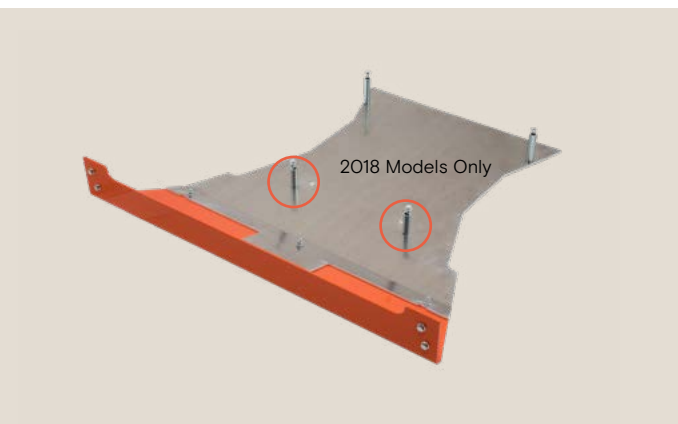
8. Use four of the supplied M8 flange bolts to attach the front of the skid plate assembly to the lower radiator support crossmember brackets. Hand tighten only.



9. Use two of the supplied 3.25" spacers, M8 x 100mm bolts, and flange nuts to attach the rear of the skid plate assembly to the existing holes on the rear crossmember. Hand tighten only.



10. Use a 13mm wrench/socket to fully tighten the skid plate hardware. Use the sequence as shown. Torque bolts to 19 ft lbs.



NOTE 2018 and older Sprinters do not have the two tabs shown on steps 5-6 above. On these models, use the two supplied 2.25" spacers, M8 x 80mm flange bolts, and flange nuts to install the skid plate assembly to the front crossmember.



NOTE 3500 Sprinters require part AO Override Brackets part # AO-P5S-2 to complete the installation



 **AGILE
OFFROAD**
SMARTER THAN DIRT



Interior



Exterior



Suspension



Air Locker &
Drivetrain



Steering &
Brakes



Air
Compressors



Armor &
Protection



Bumpers



Lighting



Wheels &
Tires



Storage &
Racks



Water &
Fuel Tanks



Winches &
Recovery



Replacement
Parts &
Accessories



Electrical



Tools

