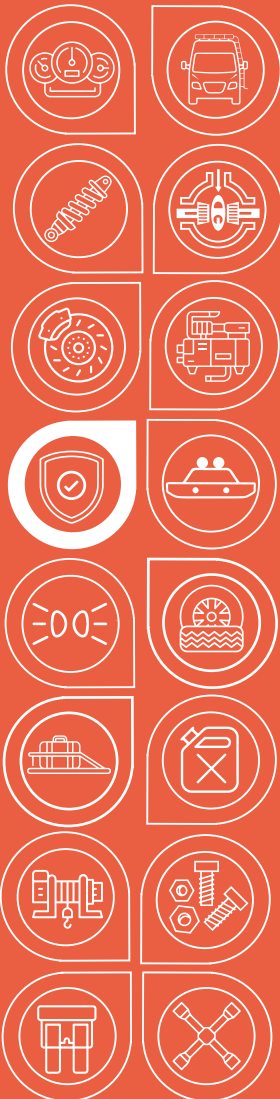




**AGILE
OFFROAD**
SMARTER THAN DIRT



Installation Guide

SPEED SENSOR GUARD FOR 23+
SPRINTER

AO-P4S1-2

INSTALLATION GUIDE

SUPERIOR PROTECTION FOR SPRINTER WHEEL SPEED SENSORS PROVIDING SUPPORT & PROTECTION TO YOUR ABS SENSOR WIRE

SPEED SENSOR GUARD FOR 23+ SPRINTER



The Agile Offroad Wheel Speed Sensor Guard offers protection for the Mercedes-Benz Sprinter's wheel speed sensor, also known as the ABS sensor. The Wheel Speed Sensor is a mechanism that records wheel speed and interacts with the Sprinter's anti-lock braking system (ABS). Due to its location, directly in front of the hub, this mechanism is highly susceptible to damage from rocks, brush and debris encountered while driving off-road. In cold weather climates, snow and ice builds up in this location and is a common cause for broken Wheel Speed Sensor/ABS Sensor wire. Our Sprinter Wheel Speed Sensor Guard / ABS Sensor Guard is made from 6061 anodized aluminum and will provide support from ice build-up and protection from whatever gets thrown at it!

SKU

AO-P4S1-2

PARTS INCLUDED

AO-P4S1-2 Speed Sensor Guard for 23+ Sprinter

TOOL NEEDED

E8 Torx Socket

5mm Allen Wrench

Zip-Tie Flush Cutters

Blue Threadlocker

INSTALLATION TIME

20 - 30 min

INSTALLATION GUIDE



1. Locate the speed sensors at the front of the driver and passenger side steering knuckles. Note: It is not necessary to remove the wheels/tires when installing the AO Wheel Speed Sensor Guards.



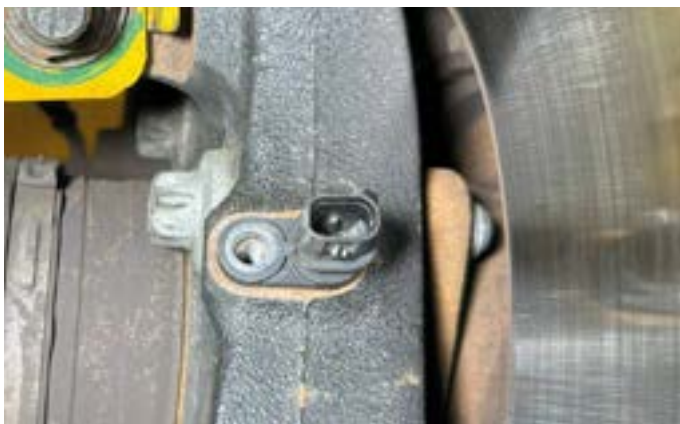
2. Locate the speed sensors at the front of the driver and passenger side steering knuckles. Note: It is not necessary to remove the wheels/tires when installing the AO Wheel Speed Sensor Guards.



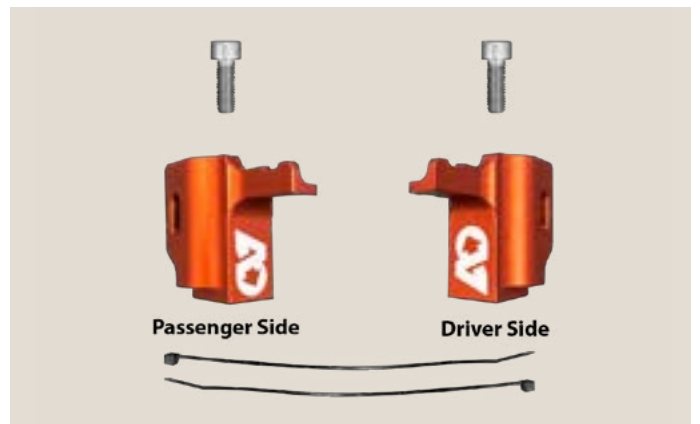
3. The driver side speed sensor harness clip is located on the bottom side as shown. Press tab and remove harness.



4. Use an E8 Torx socket to remove sensor/sensor guard bolt.



5. Remove sensor guard while leaving sensor in place.



6. The AO Wheel Speed Sensor Guards are passenger and driver side specific.

INSTALLATION GUIDE



7. Install the driver side AO Wheel Speed Sensor Guard as shown.



8. Apply a small drop of blue threadlocker to the supplied M6x1mmx18mm bolt and bolt the AO Wheel Speed Sensor Guard to the knuckle using a 5mm allen wrench. Torque to approx. 5 ft lbs.



9. Re-attach the speed sensor harness to the speed sensor. Use the supplied zip-tie to attach the speed sensor harness to the AO Wheel Speed Sensor Guard as shown.



10. The passenger side speed sensor harness clip is located on the top side of sensor as shown. Press tab and remove harness.



11. Repeat steps 4-10 on the passenger side.



 **AGILE
OFFROAD**
SMARTER THAN DIRT



Interior



Exterior



Suspension



Air Locker &
Drivetrain



Steering &
Brakes



Air
Compressors



Armor &
Protection



Bumpers



Lighting



Wheels &
Tires



Storage &
Racks



Water &
Fuel Tanks



Winches &
Recovery



Replacement
Parts &
Accessories



Electrical



Tools

