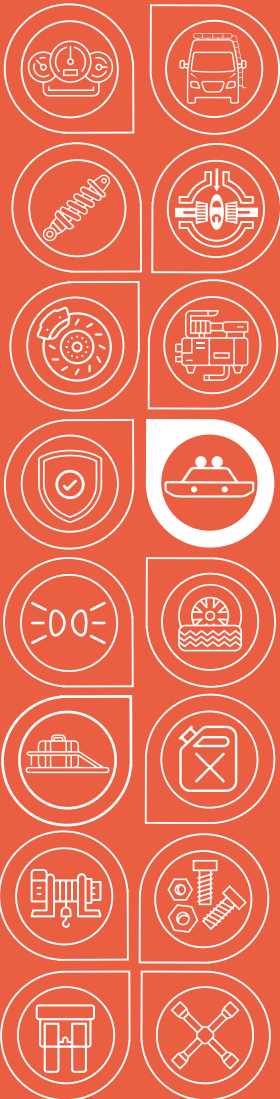




**AGILE
OFFROAD**
SMARTER THAN DIRT



Installation Guide

STEPSHIELD PRO SPRINTER HITCH
STEP & SKID PLATE

AO-B3S-1 (WITH SKID PLATE)

AO-B3S-3 (WITHOUT SKID PLATE)

STEP CONFIDENTLY, DRIVE SECURELY

WITH YOUR ULTIMATE HITCH
STEP SOLUTION

AO-B3S-1 | AO-B3S-3



STEPSHIELD PRO SPRINTER HITCH STEP & SKID PLATE

Step to the next level with the StepShield Pro Sprinter Hitch Step & Skid Plate. Designed to enhance your Sprinter van experience, the Shield Pro hitch step offers improved accessibility, integrated lighting, and added protection. The custom powder-coated non-skid texture ensures safe access in all conditions, while the Baja Designs S2 Sport Light Pods provide exceptional lighting. Whether you're navigating off-road or simply need easier access to the rear of your van, the StepShield Pro has you covered.

KEY FEATURES



Fits 2007+ Sprinter Vans with Factory Hitch

This hitch step is specifically designed to fit Sprinter vans from 2007 onwards that have a factory-installed hitch, ensuring a perfect fit and seamless integration with your vehicle.



Compatible with Factory Sprinter Switch or Switch-Pros Setup

The integrated lights are designed to work seamlessly with either a factory Sprinter switch or a Switch-Pros setup, providing flexibility in how you control and configure the lighting system.



Made from 6061 T6 Aluminum Plate

Constructed from high-quality 6061 T6 aluminum, the hitch step is both lightweight and extremely durable, making it ideal for heavy-duty use and long-lasting performance.



Includes Two Integrated Baja Designs S2 Sport Light Pods

High-performance lights provide powerful illumination, enhancing visibility and safety. They can be used as utility lights or reverse lights, depending on your needs.



Powder-Coated Black with Custom Non-Skid Texture

The hitch step is powder-coated black for a sleek, stylish appearance. The custom non-skid texture on the step ensures safe footing in all conditions, preventing slips and falls.



Available with or without a Skid Plate

You can choose to have the hitch step with or without the skid plate, depending on your specific needs. The skid plate offers additional protection for the rear of your van, especially useful during off-road driving.

BENEFITS

01 Improved Accessibility

The StepShield Pro hitch step makes accessing the rear area of your van effortless, ensuring safe and easy entry and exit.

02 Enhanced Lighting

The integrated Baja Designs S2 Sport Light Pods provide powerful illumination, perfect for utility or reverse lights, enhancing visibility in low-light conditions.

03 Increased Protection

The skid plate option protects the rear end of your van from impacts and scrapes, especially during off-road driving, preventing potential damage and ensuring smooth navigation over rough terrain.

STEP CONFIDENTLY, DRIVE SECURELY, WITH YOUR ULTIMATE HITCH STEP SOLUTION



STEPSHIELD PRO SPRINTER HITCH STEP

SKU

AO-B3S-1	StepShield Pro with Skid Plate
AO-B3S-3	StepShield Pro without Skid Plate

TECHNICAL SPECIFICATIONS

Vehicle Fit	Mercedes Sprinter 2500 w/ Factory Hitch Second Generation (NCV3/906): 2014 - 2018 Third Generation (VS30/907): 2019-2022 2023+
Material	6061 T6 Aluminum
Material Coating	Black powder coat finish
Lighting	(2) integrated Baja Designs S2 Sport Light Pods
Switches	Options for use with a factory Sprinter switch or Switch-Pros set up
Skid Plate	Mounting hardware included
Hardware	Black powder coat finish
Product Weight	10lbs
Back Step Dimension	34in x 13.5in x 3 3/4in
Skid Plate Dimensions	33 3/8in x 13in x 1in
Packaging Dimension	35in x 14in x 4in

PARTS INCLUDED

AO-B3S-1	StepShield Pro with Skid Plate
AO-B3S-3	StepShield Pro without Skid Plate

RELATED PRODUCTS

AOR4135	A2 Sprinter Hitch Bracket For Air & Water Fittings (Air and Water)
AOR2200	Agile Offroad Hitch Receiver Soft Shackle Mount
AOR4134	A2 Sprinter Hitch Bracket For Air (Air Only)
SP9100-D	Switch-Pros Switch Panel Power System by Agile Offroad (8 Switches)
RCR-Force 12	Switch-Pros Switch Panel Power System by Agile Offroad (12 Switches)
AOR3333	Overhead Switch-Pros Mount by Agile Offroad

STEP CONFIDENTLY, DRIVE SECURELY WITH YOUR ULTIMATE HITCH STEP SOLUTION

STEPSHIELD PRO SPRINTER HITCH STEP
& SKID PLATE



Our Sprinter hitch step offers numerous benefits that will greatly improve your experience with your van. Firstly, it provides improved accessibility. Access to the rear van area becomes much easier with the addition of an AO Sprinter hitch step specifically designed for your factory Sprinter hitch. The step platform contains a custom powder coated non-skid texture for safe access in all conditions. Another advantage of the Sprinter hitch step is the added light provided by the integrated Baja Designs S2 Sport Light Pods. These compact and powerful lights, feature quality that is second to none and make for awesome utility lights or reverse lights. Available with wiring configurations for use with a factory Sprinter switch or Switch-Pros set up.

The StepShield Pro Sprinter Hitch Step with the skid plate option also provides added protection and performance. With the extended rear overhang and the limited departure angle of Sprinter vans, its common to scrape when the vehicle's upward angle increases while driving off-road. In most cases, the first thing to hit in back is the hitch and tow hooks, which could simply dig into dirt or sand and cause the van to get stuck and cause damage to wiring. The Agile Offroad Sprinter Hitch Step & Skid Plate provides protection and glide for rear end impact situations.

SKU

AO-B3S-1

AO-B3S-3

PARTS INCLUDED

AO-B3S-1 StepShield Pro with Skid Plate

AO-B3S-3 StepShield Pro without Skid Plate

TOOL NEEDED

1/2" Wrench/Socket

9/16" Wrench/Socket

Zip Tie Cutters

INSTALLATION GUIDE



1. Locate the 2 left and 2 right side factory hitch holes. Then locate the 2 oval holes at the left and right of the receiver opening. These will be the AO StepShield and skid plate mounting points.



2. Slide the AO StepShield onto the hitch and line up the left and right side holes.



3 A/B. Passenger Side: Install 2 of the supplied $\frac{3}{8}$ -16x1.25" bolts and $\frac{3}{8}$ " washers through the StepShield and hitch holes.



4. Install the supplied passenger side bracket using the $\frac{3}{8}$ " washers and nyloc nuts. Bracket must be installed as shown. Do not fully tighten hardware.



5. Driver Side: Install 2 of the supplied $\frac{3}{8}$ -16x1.25" bolts and $\frac{3}{8}$ " washers through the StepShield and hitch holes.

INSTALLATION GUIDE



6. Install the supplied driver side bracket using the $\frac{3}{8}$ " washers and nyloc nuts. Bracket must be installed as shown. Do not fully tighten hardware.



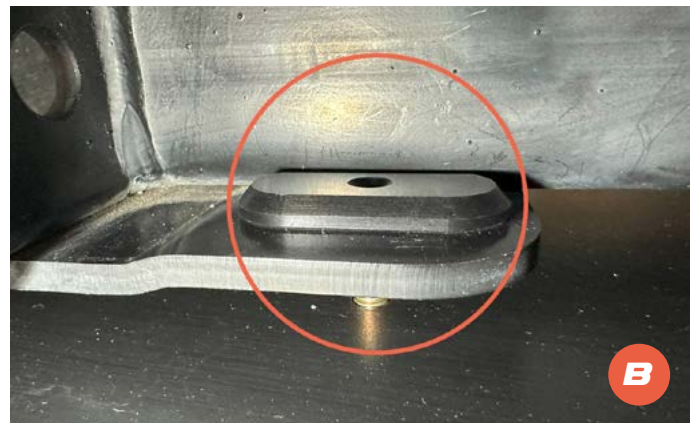
7. Use a pair of $\frac{9}{16}$ " wrenches to fully tighten both passenger and driver side mounting hardware. Make sure AO StepShield is level with hitch. Torque to 40 ft lbs.



8. Electrical: Install the supplied y-harness as shown. Connect lights to harness and then use zip ties to attach the harness to the zip tie slots in AO StepShield.



9. Skid Plate: Use the supplied $\frac{5}{16}$ -18x1" bolts and hardware to mount the skid plate to the brackets installed in steps 4-6. Hand tighten only.



10 A/B. Use the supplied oval nut plates and $\frac{5}{16}$ -18x1" bolts and washers to mount the skid plate to the oval holes at the left and right of receiver opening.



// Use a pair of ½" Wrenches to fully tighten all skid plate hardware. Torque to 20 ft lbs.



**AGILE
OFFROAD**
SMARTER THAN DIRT



Interior



Exterior



Suspension



Air Locker &
Drivetrain



Steering &
Brakes



Air
Compressors



Armor &
Protection



Bumpers



Lighting



Wheels &
Tires



Storage &
Racks



Water &
Fuel Tanks



Winches &
Recovery



Replacement
Parts &
Accessories



Electrical



Tools

