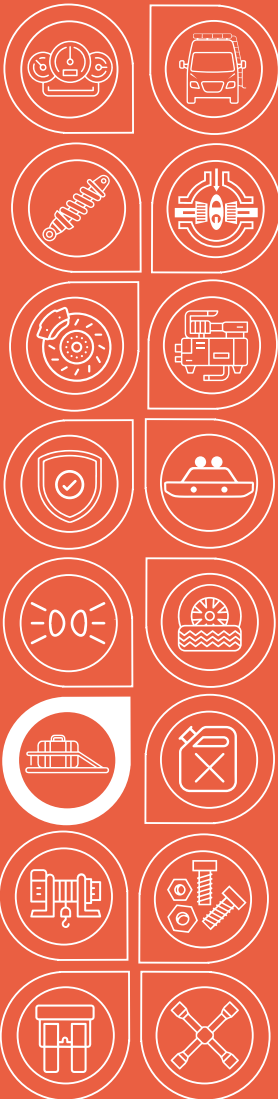




**AGILE
OFFROAD**
SMARTER THAN DIRT



Installation Guide

STARLINK MOUNTING KIT FOR
WINNEBAGO REVEL

AOR228-SL

MOUNT YOUR STARLINK

WITH UNMATCHED SECURITY

AOR228-SL



STARLINK MOUNTING KIT FOR WINNEBAGO REVEL

The Agile Offroad Starlink Mounting Kit is designed to seamlessly integrate with your Winnebago Revel roof rack or any universal mounting solution, providing a secure and low-profile solution for mounting your Starlink system. This kit includes everything you need to install either a Star-Mount Flat Mount or Quick Release Mount, ensuring your Starlink remains stable and functional during all your adventures.

KEY FEATURES



Minimal Modifications Required

Easy installation process tailored for the Winnebago Revel roof rack.



High Durability

Constructed with corrosion-resistant aluminum and stainless-steel hardware for long-lasting use.



Universal Utility

Compatible with either Star-Mount or boxes oil accessories.



Low-Profile Design

Ensures a sleek and unobtrusive mount on your vehicle.

BENEFITS

- ✓ Extremely secure and resilient mounting solution.
- ✓ Designed to withstand harsh outdoor conditions while maintaining a low-profile aesthetic.
- ✓ Ensures your Starlink system stays firmly in place, enhancing your connectivity and convenience on every journey.
- ✓ Can be used as a universal mounting solution.
- ✓ Minimal modifications may be required for other installations like Star-Mount Flat Mount only.

VERSATILE AND SECURE STARLINK MOUNTING KIT WITH FOR WINNEBAGO REVEL

Installation Manual



SKU AOR228-SL



STARLINK MOUNTING KIT FOR WINNEBAGO REVEL

SKU

AOR228-SL Starlink Mounting Kit For Winnebago Revel

TECHNICAL SPECIFICATIONS

Product Fit	Factory Winnebago Revel Roof Rack
Material	(2) Aluminium
Finish	(2) Black Powder Coated
Hardware	(2) Stainless Steel
Product Dimensions	1 st part 31 1/2inL x 4inW x 2inH 2 nd part 31 1/4inL X 1 1/2inW X 1 1/2inH
Packging Dimensions	32in x 3in x 3in
Weight	3.05 lbs (all pieces together)

PARTS INCLUDED

1	Inside Rail
1	Outside Rail
1	Stainless Hardware Kit

RELATED PRODUCTS

AOR143	Starlink On-Off Switch Kit
NEX05	Backup Camera Lifter for 2019+ Sprinter
Call to Order	Star-Mount Explorer Pro Bundle For Gen 3 Starlink
Call to Order	Star-Mount Voyager Pro Bundle For Gen 3 Starlink

MOUNT YOUR STARLINK WITH UNMATCHED SECURITY

STARLINK MOUNTING KIT FOR WINNEBAGO REVEL



The Agile Offroad Starlink Mounting Kit is designed to seamlessly integrate with your Winnebago Revel roof rack or any universal mounting solution, providing a secure and low-profile solution for mounting your Starlink system. This kit includes everything you need to install either a Star-Mount Flat Mount or Quick Release Mount, ensuring your Starlink remains stable and functional during all your adventures.

SKU

AOR228-SL

PARTS INCLUDED

1 x Inside Rail

1 x Outside Rail

1 x Stainless Hardware Kit

TOOL NEEDED

½" Wrench or Socket w/Ratchet

Anti-Seize

5/16" Drill Bit and Drill

Phillips Screwdriver

Ladder X 2

Zip Tie Cutter

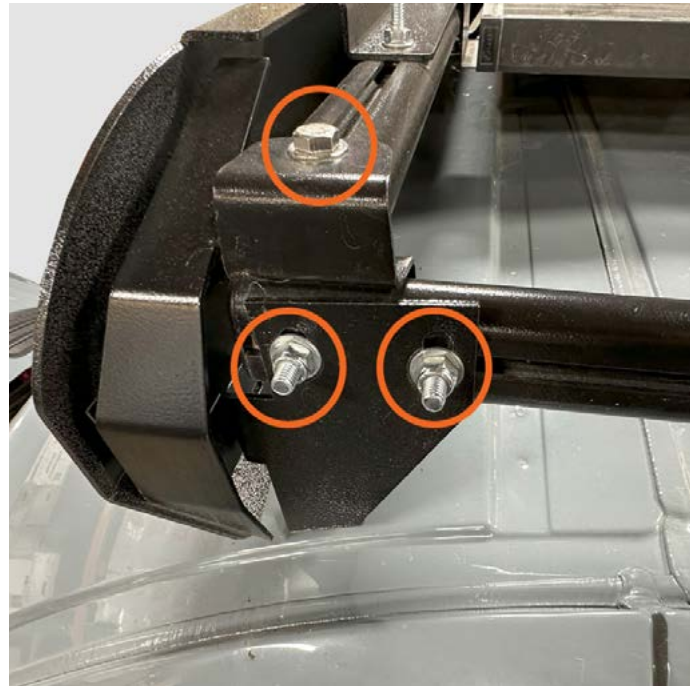
Marker

** Use anti-seize on all stainless hardware**

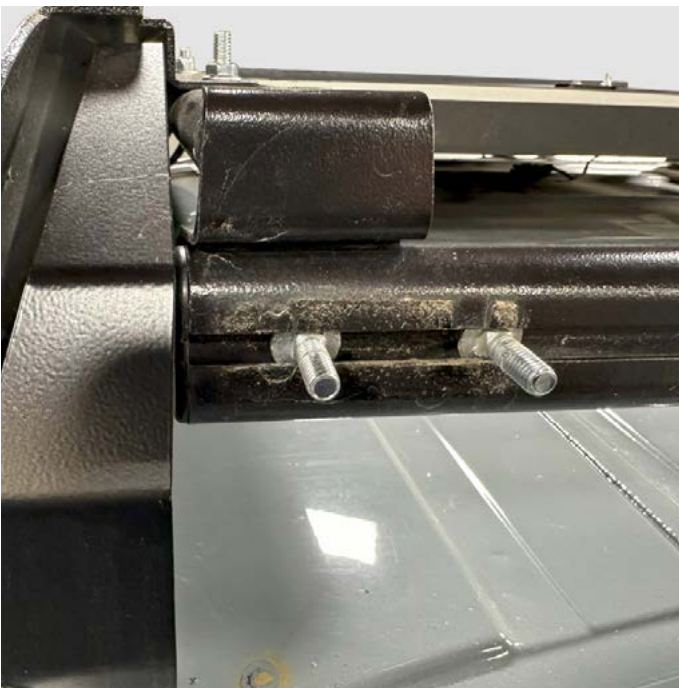
INSTALLATION GUIDE



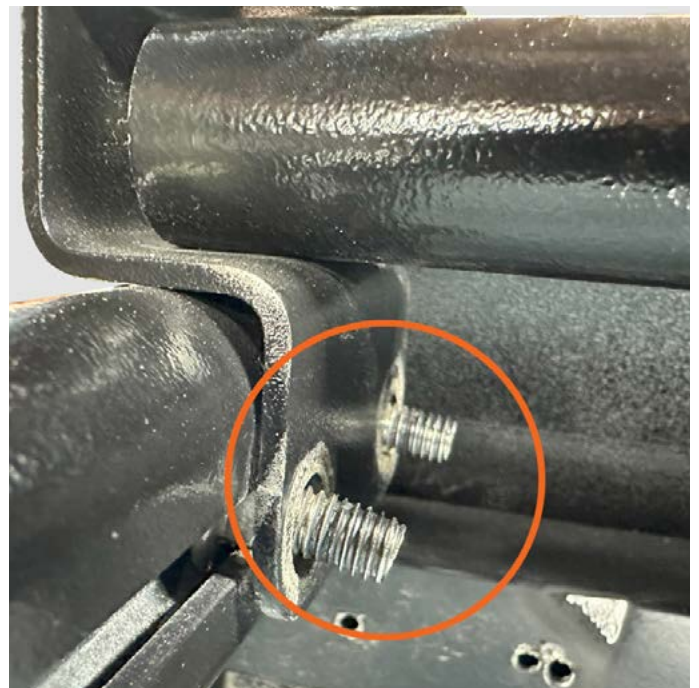
1. Set up a ladder using proper safety protocol. Familiarize yourself with the Revel roof rack and the Agile mounting brackets.



2. Use a ½" wrench/socket to remove the 2 side rail bracket nuts and a Phillips screwdriver to remove inner Phillips screws. Then remove the single cross-rail bracket bolt.

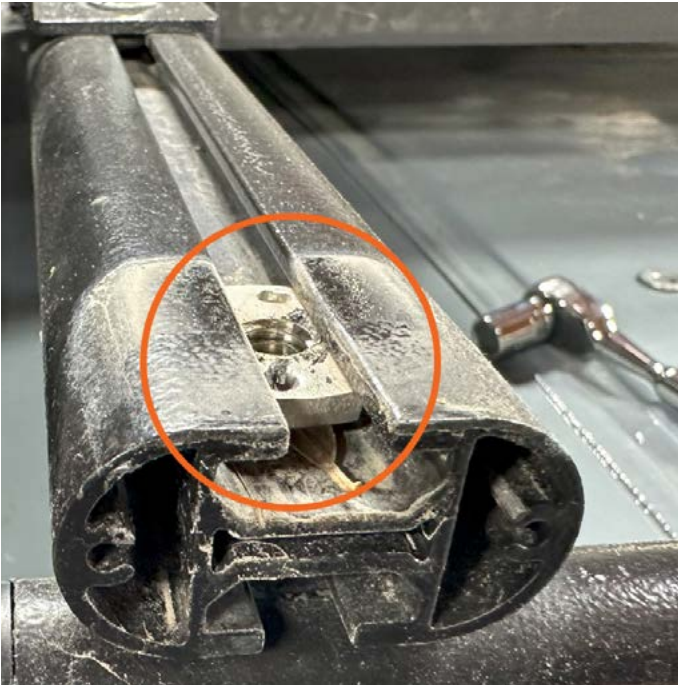


3. Completely remove the side bracket.

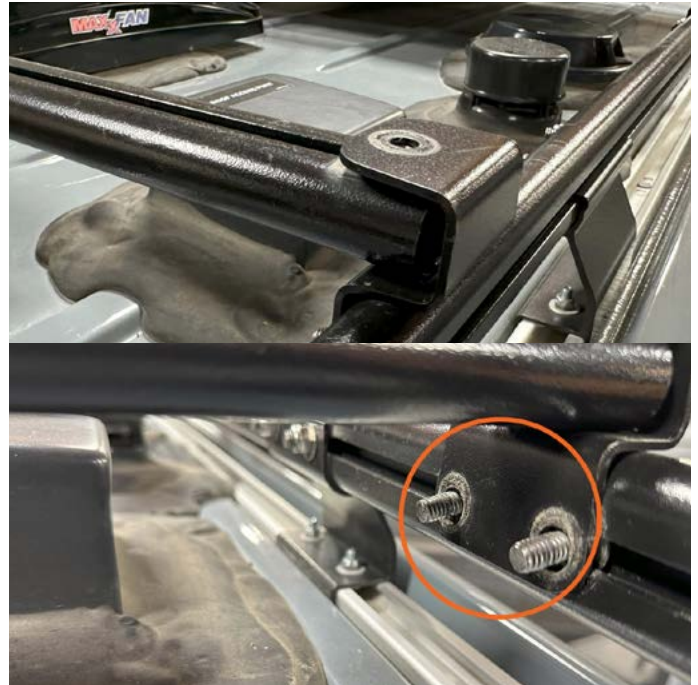


4. Use a ½" wrench/socket to remove the 2 inner cross rail bracket bolts.

INSTALLATION GUIDE



5. Completely remove the cross-rail bracket then slide out the t-nut.



6. Use a ½" wrench/socket to remove the 2nd cross-rail bracket bolt and 2 nuts.



7. Completely remove the bracket and slide out the t-nut.

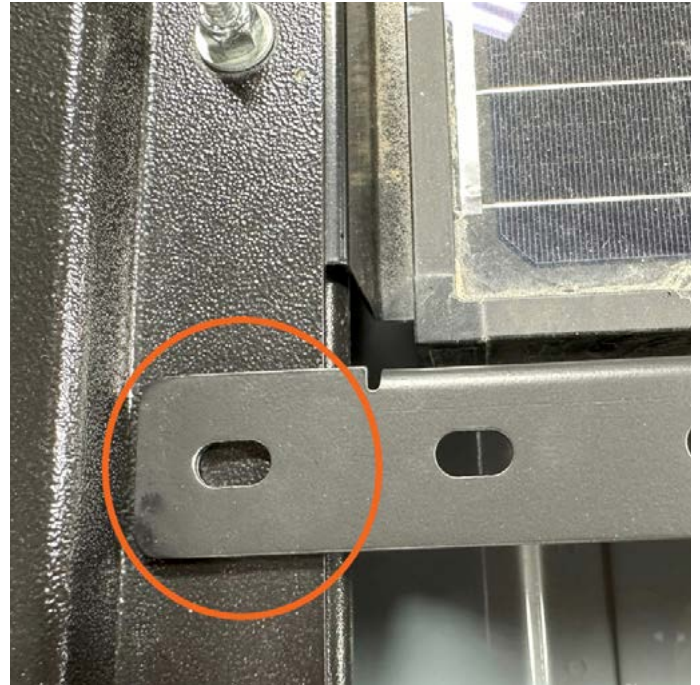


8. Install one of the supplied 5/16"-18x1" carriage bolts into the cross-rail. Slide carriage bolt in towards solar panel.

INSTALLATION GUIDE



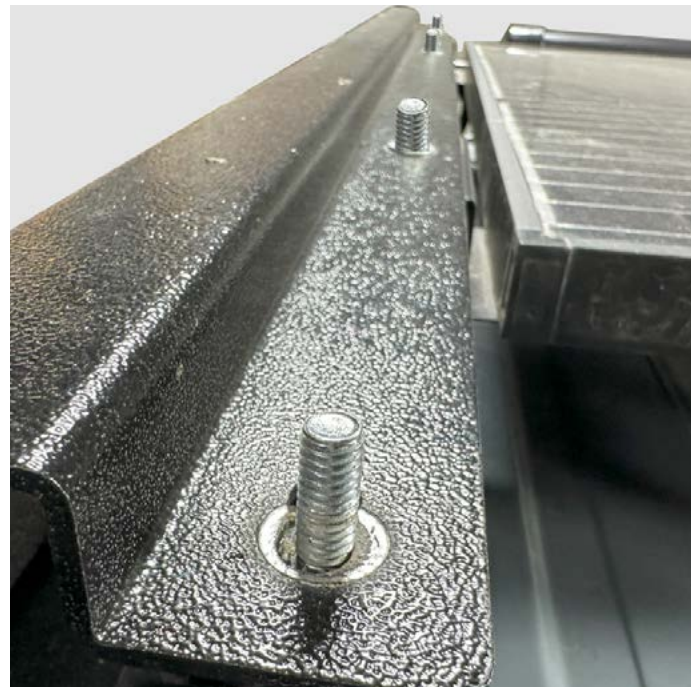
9. Place the Agile inside rail between the front and rear cross-rails $\frac{1}{4}$ " from solar panel. Use the previously installed carriage bolt at the rear of rail.



10. The inner rail will sit above the front fairing and front cross-rail as shown.



11. Use a marker to trace the front rail hole onto the front fairing.



12. Use a $\frac{1}{2}$ " wrench/socket to remove the 4 front fairing nuts. ****Do Not Completely remove the 4 nuts until you are ready to remove the fairing.**

INSTALLATION GUIDE



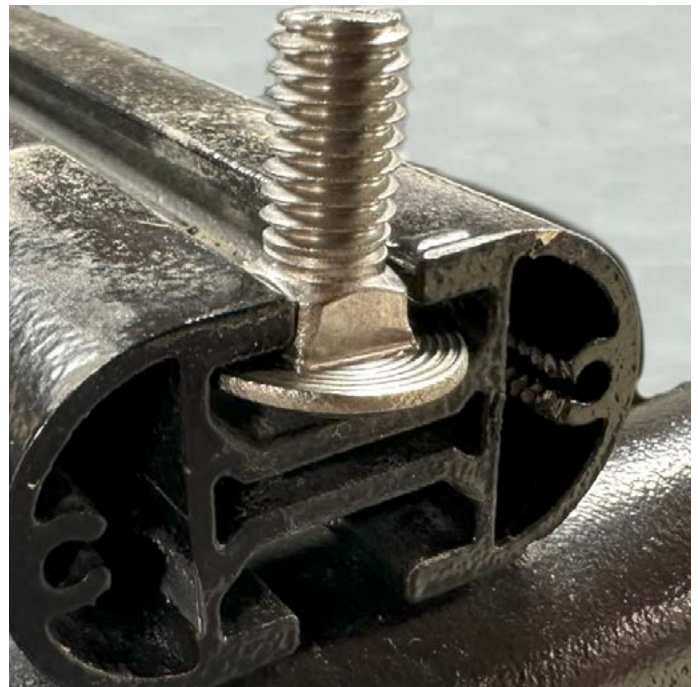
13. Use a Phillips screwdriver to remove the 2 passenger side fairing screws.



14. Locate the fairing light harness. Cut off zip ties and unplug at connector. With the help of an assistant, lift fairing from cross-rail and remove fairing completely.



15. Locate the trace mark from step 11. Use an $\frac{11}{32}$ \" drill bit and drilled at the center of the trace mark $\frac{7}{8}$ \" from the inner edge of fairing.

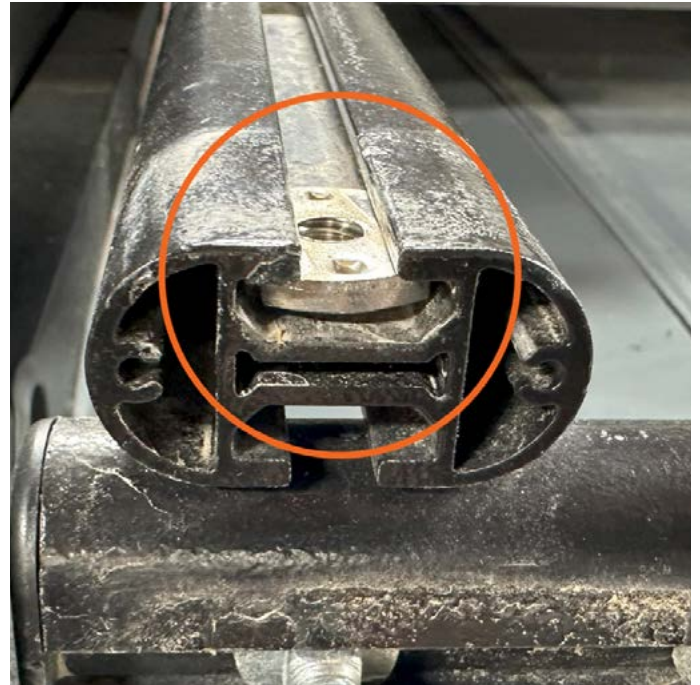


16. Install one of the supplied $\frac{5}{16}$ \"-18x1\" carriage bolts into the front cross-rail between the two existing driver side carriage bolts. This carriage bolt will go through the newly drilled fairing hole and the Agile inner rail.

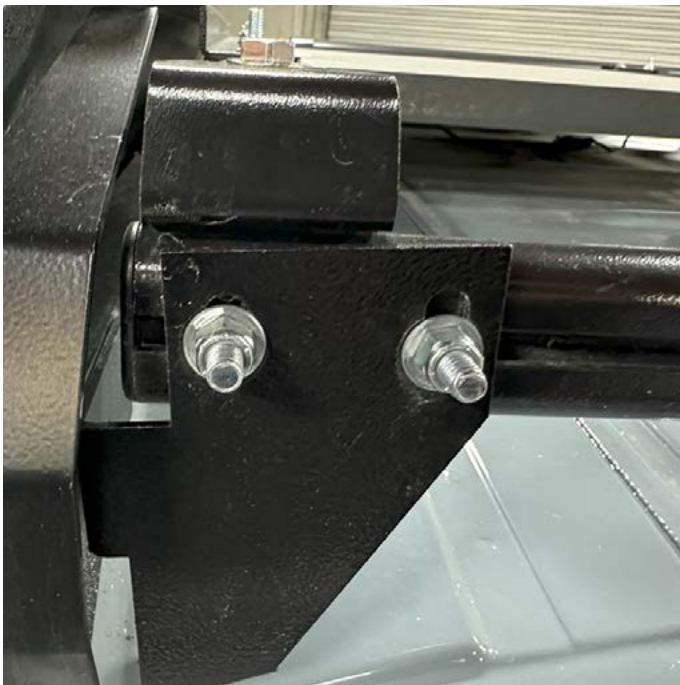
INSTALLATION GUIDE



17. Re-install front fairing using the factory hardware and the new $\frac{5}{16}$ "-18x1" carriage bolt. Install Agile inner rail onto $\frac{5}{16}$ "-18x1" 1st and 2nd rail carriage bolts. Use the supplied $\frac{5}{16}$ " washers and $\frac{5}{16}$ "-18 nyloc nuts. Do not completely tighten nuts.



18. Re-install factory t-nut.



19. Re-install factory front side rail bracket and 1st and 2nd rail crossbar brackets.



20. Use the supplied $\frac{5}{16}$ "-18x.625" bolts and $\frac{5}{16}$ " washers to install the Agile outer rail onto the 1st and 2nd crossbar brackets. The bolts will go through the crossbar brackets into the t-nuts. Align the Agile inner and outer brackets then fully tighten all nuts and bolts. Torque to 12 ft lbs. Re-connect fairing light connector and zip tie harness to crossbar.

 **AGILE
OFFROAD**
SMARTER THAN DIRT



Interior



Exterior



Suspension



Air Locker &
Drivetrain



Steering &
Brakes



Air
Compressors



Armor &
Protection



Bumpers



Lighting



Wheels &
Tires



Storage &
Racks



Water &
Fuel Tanks



Winches &
Recovery



Replacement
Parts &
Accessories



Electrical



Tools

