

# INSTALLATION GUIDE



**AGILE  
OFFROAD**  
SMARTER THAN DIRT®

**AO OVERHEAD SWITCH MOUNT**

# GENERAL INFORMATION

The AO Overhead Switch Pros Mount is designed to be installed on the factory overhead control panel of 2019+ Sprinter vans. We recommend the Overhead Mount be installed by an authorized AO dealer (refer to [agileoffroad.com](http://agileoffroad.com) to find a dealer near you).

**\*\*Read the instructions completely before starting the installation process.\*\***

## PARTS INCLUDED

Part # AOR3333:

1 x AO Overhead Switch Mount

**\*\*Refer to the Switch Pros for wiring instructions.\*\***

## TOOLS NEEDED

Credit Card

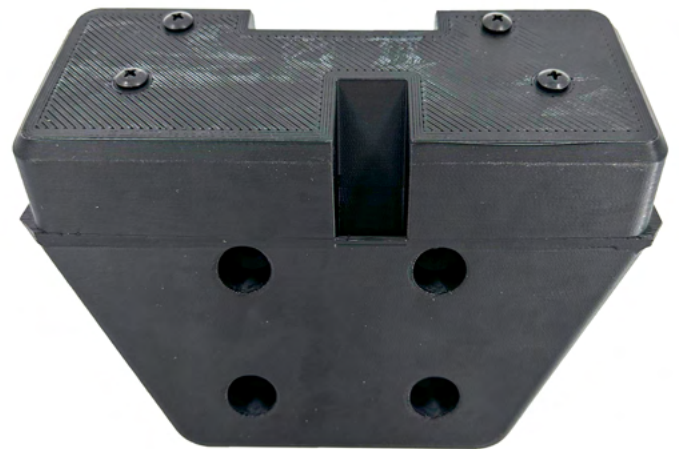
1/4" Drill Bit

Step Bit - 3/4"

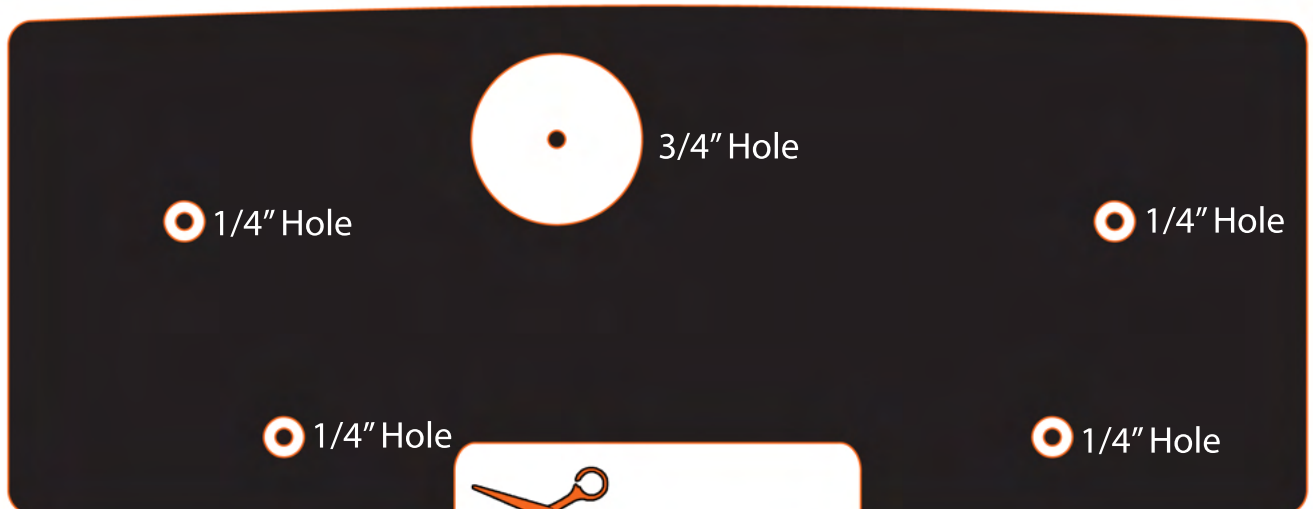
Phillips Screwdriver



Front Side

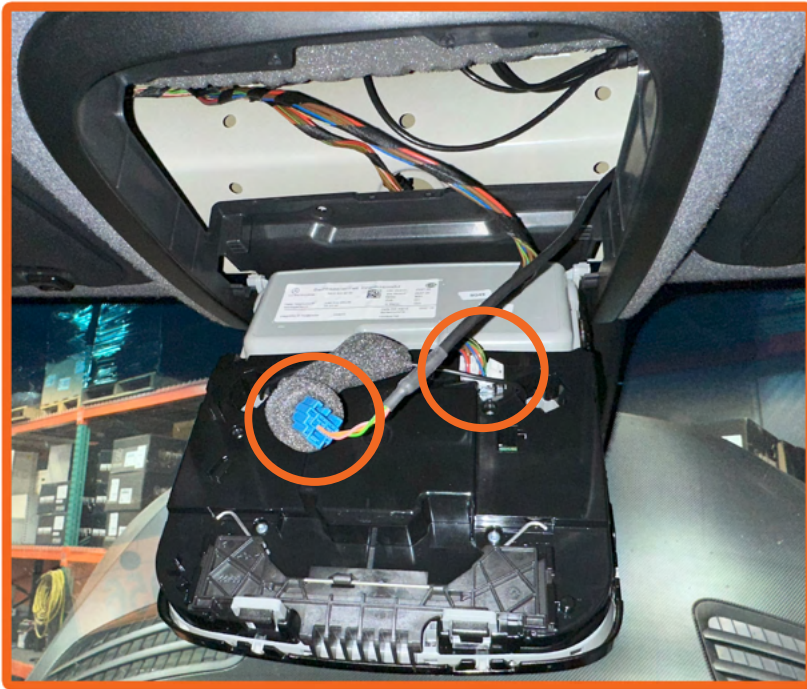


Back Side

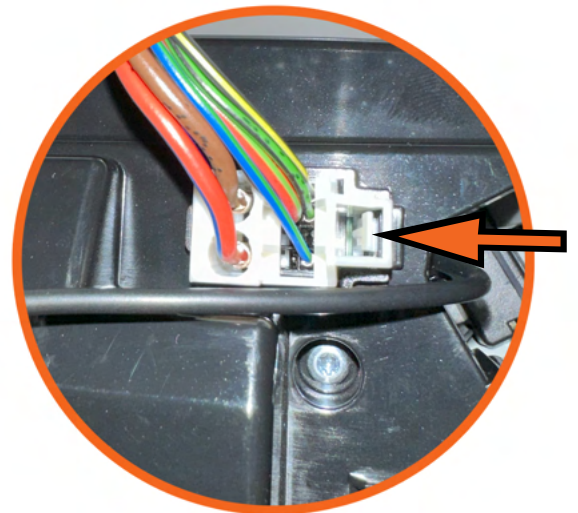




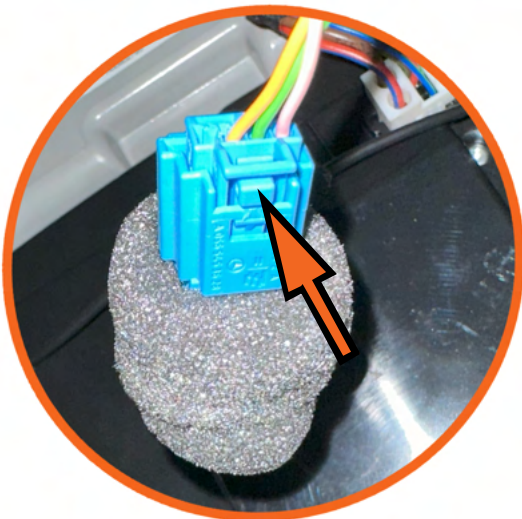
1. Use your favorite credit card and slide it in the gap between the overhead control panel and the outer trim. This will release the front of the control panel and will allow the panel to swing forward.



2. Locate and disconnect any wire connectors before attempting to remove the control panel.



2b. To remove the white connector, depress the locking tab (shown above) while pulling on the connector.



2c. To remove the blue connector, depress the locking tab (shown above) while pulling apart both male and female connectors.



**3.** Slide the control panel back and remove completely.



**4.** Open the eyeglass compartment. Remove the compartment door by pulling the door to the right while pulling up. Then remove the elastic cord from panel.



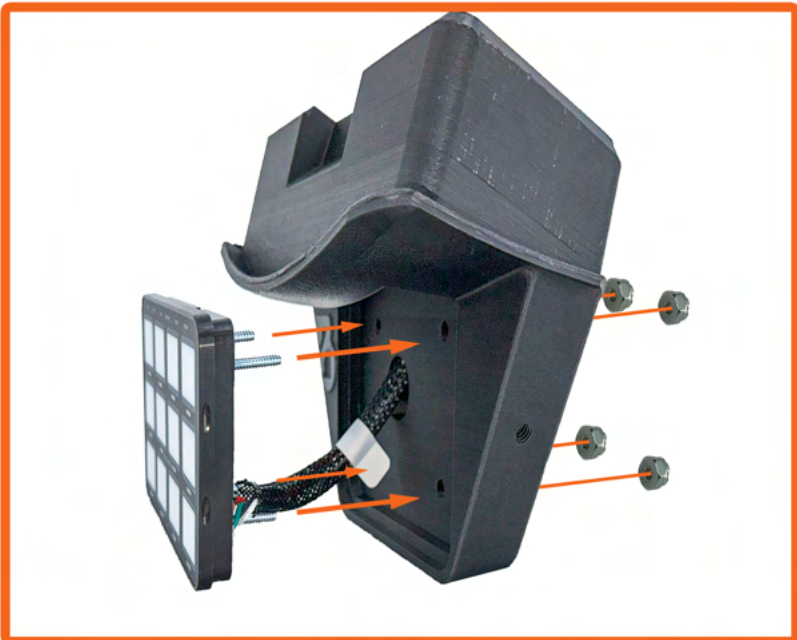
**5.** Mark the hole location on the back side of the control panel using the supplied template.



**6.** Drill the four 1/4" holes and the single 3/4" hole.



**4.** Clean out any rough edges.



**5.** Mount the RCR-Force 12 Switch Pros panel onto the AO Overhead Mount using the Switch Pros supplied hardware.



7. Mount the AO Overhead Mount assembly to the control panel using the supplied phillips screws.



8. The complete overhead assembly is now ready for installation.



9. Re-install the overhead panel assembly.

**\*\*Refer to the Switch Pros instructions for final wiring procedure\*\***