

INSTALLATION GUIDE



**AGILE
OFFROAD**
SMARTER THAN DIRT®

AWD SPRINTER DRIVESHAFT SAFETY SPACER

GENERAL INFORMATION

The AO Sprinter Driveshaft Safety Spacer is designed to be installed on 2023+ AWD Sprinters to help eliminate the front driveshaft from disconnecting from the front differential pinion. We recommend the Driveshaft Safety Spacer be installed by an authorized AO dealer (refer to agileoffroad.com to find a dealer near you).

****Read the instructions completely before starting the installation process.****

PARTS INCLUDED

Part # AOR060

- (1) Driveshaft Spacer
- (1) Red Loctite Capsule
- (6) M10-1.5 X 55 12 Point Cap Screws
- (1) 3/8 Inch Drive x 10 mm 12-Point Socket

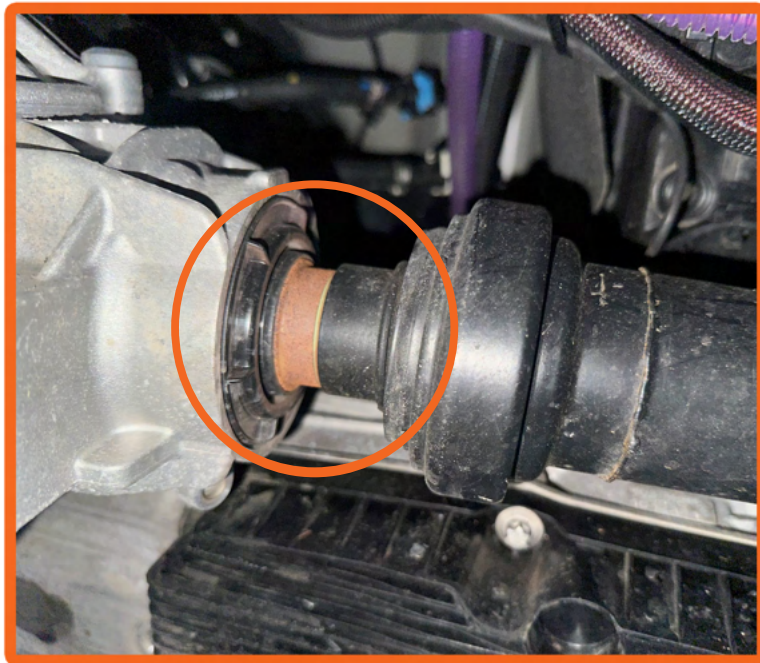


TOOLS NEEDED

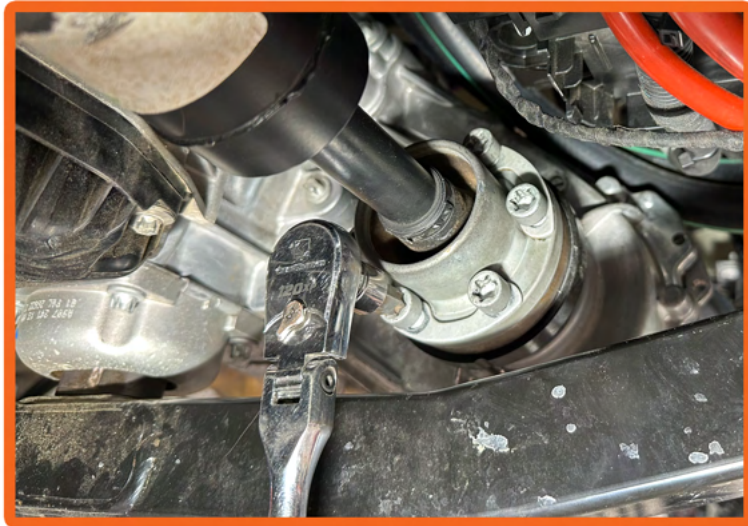
- T55 Torx Bit Socket
- 3/8" Drive Ratchet
- 3/8" Drive Torque Wrench
- 4-6" Strap Wrench



1. Measure the gap between the front driveshaft and the front differential pinion seal. The gap should be 1/8" or less.



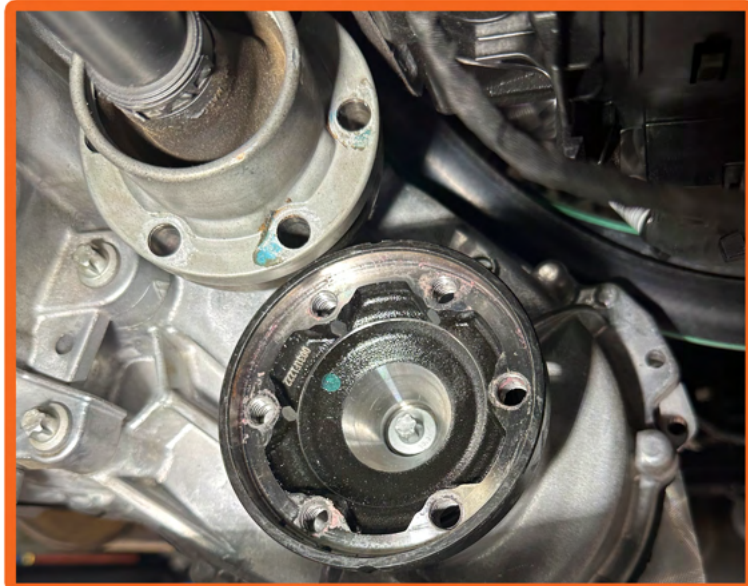
1a. The driveshaft pictured above has pulled out. We recommend the complete removal of driveshaft so that the seal and retaining clip can be inspected for damage.



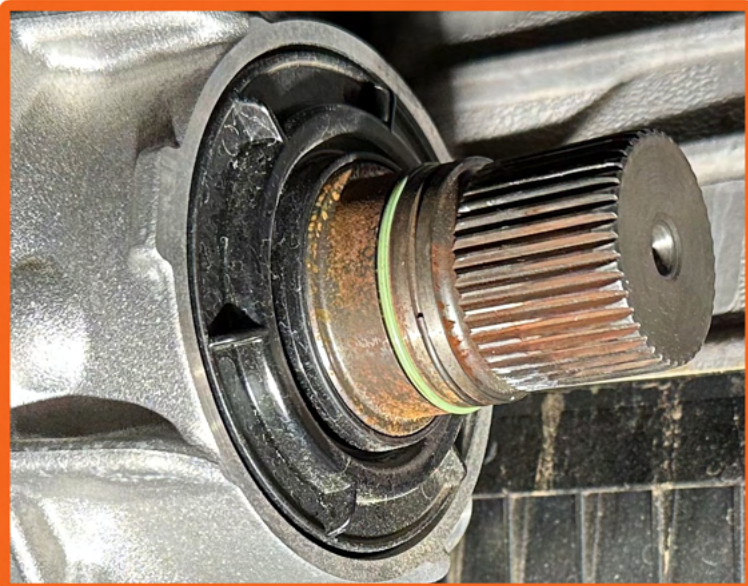
2. Use a T55 torx bit to remove the six bolts holding the rear of the driveshaft to the transfer case flange.



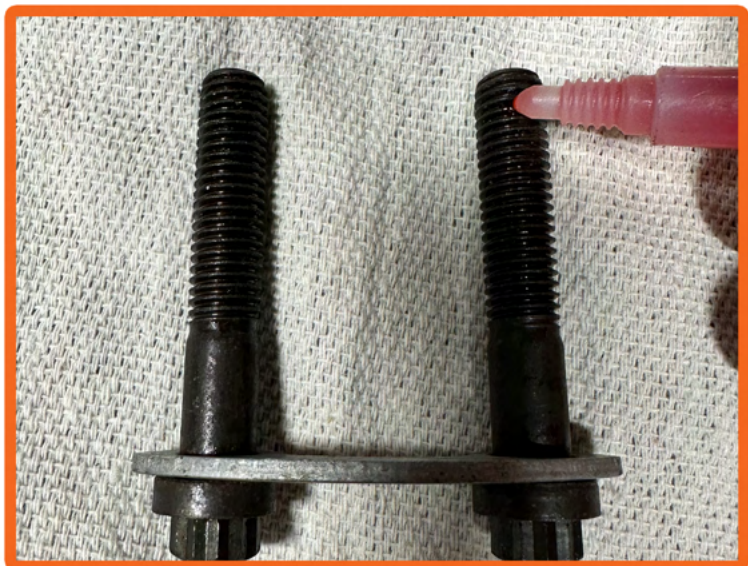
3. Completely remove all factory bolts and 2-hole spacer plates.



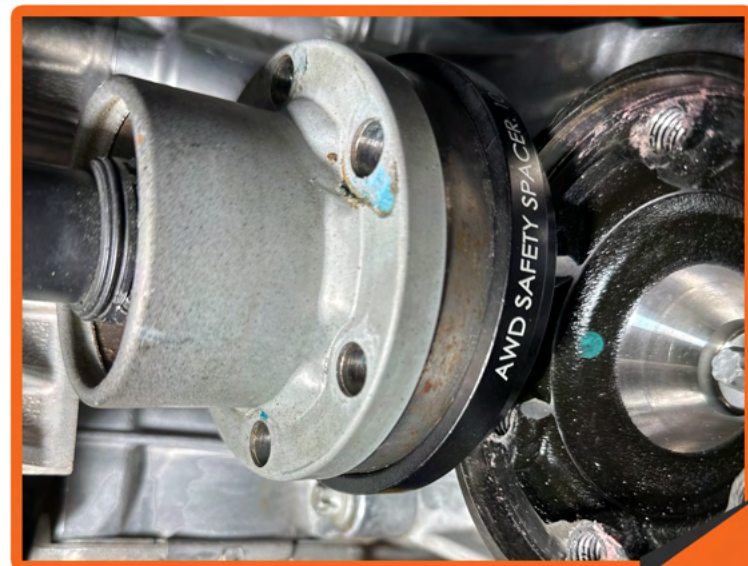
4. Compress driveshaft towards engine while pushing up towards transmission.



4a. If performing a seal and retaining clip inspection, pull driveshaft off of differential pinion. Use Mercedes # 9073300602 if seal or clip are damaged.



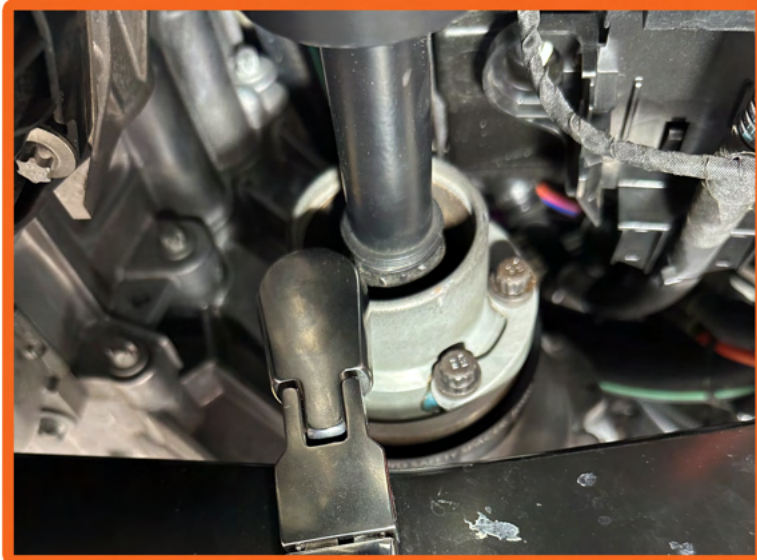
5. Apply a small drop of loctite to each bolt. Re-use the factory 2-hole spacer plate.



6. Install AO spacer onto driveshaft as shown. Line up bolt holes. Make sure the driveshaft is fully seat to front pinion showing a 1/8" gap.



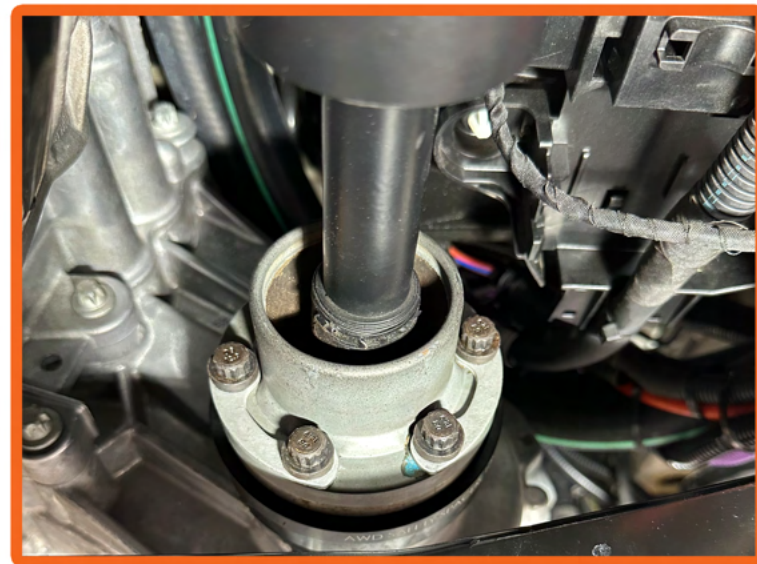
7. Align driveshaft and AO spacer to transfer case flange. Install supplied 12-point bolts with factory 2-hole spacers.



8. Tighten bolts then torque to 50 ft lbs.



9. If performing work on a lift, use a strap wrench to hold the driveshaft from spinning.



10. Perform a final inspection.