

INSTALLATION GUIDE



**AGILE
OFFROAD**
SMARTER THAN DIRT®

WATER TANK FILL KIT

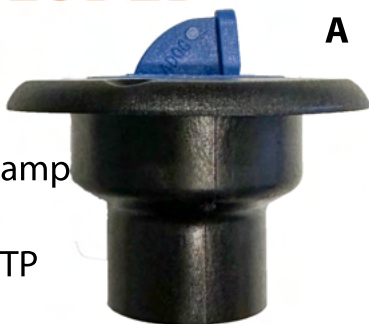
GENERAL INFORMATION

The AO Sprinter Water Tank Fill Kit includes all the major fittings, hoses, water line bracket, and hardware required to plumb the spare tire location auxiliary water tank. Additional parts may be required if adding a water pump or filter.

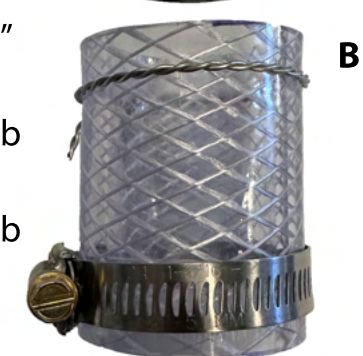
****Read the instructions completely before starting the installation process.****

PARTS INCLUDED

A(1). Deck Filler w/Blue Cap



B(1). 2" Clear Hose w/Clamp & Safety Wire



C(1). 1 1/2" id X 1 1/2" MTP Plastic Barb Fitting



D(1). 1 1/2" MNTP to 1/2" FNPT Adapter



E(1). 1/2" NPT X 1/2" Barb Elbow Adapter



F(1). 3/4" NPT X 1/2" Barb Elbow Adapter



G(2). GHT to 1/2" Barb Adapter



H(1). 3/4" Barb to High Flow Quick Disconnect



I(1). GHT to High Flow Insert



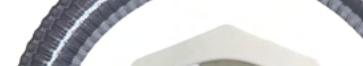
J(1). Water Fitting Bracket



K(3). 3/4" ID Clear Hose



L(9). 1/2" ID Clear Hose



M(1). 1/4" Hardware Kit



A

J

G

B

H

E

F

C

I

M

D

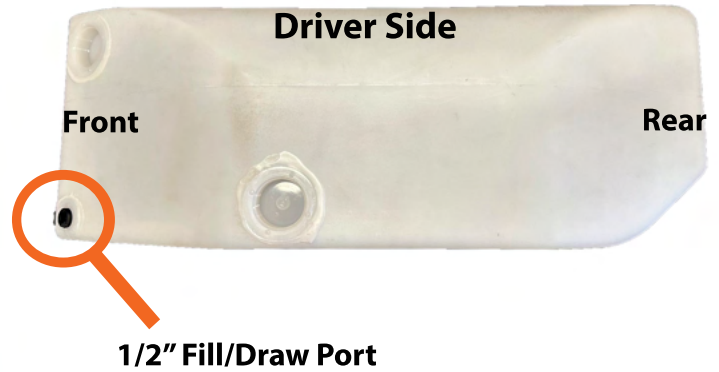
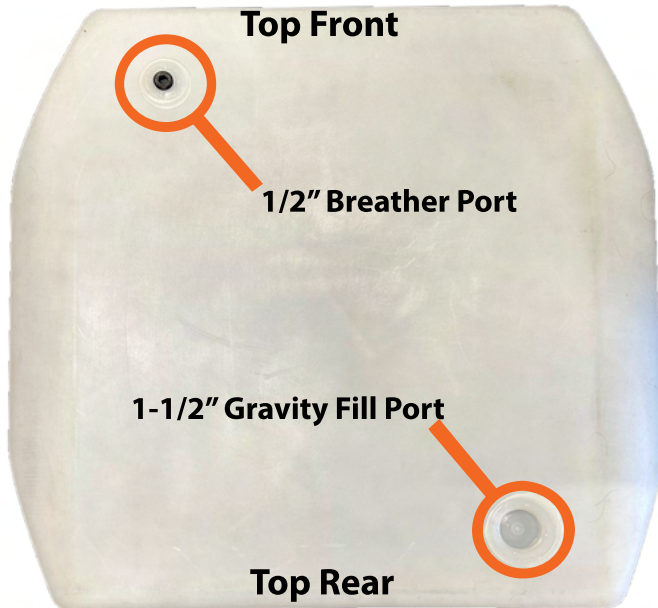
K

L

TOOLS NEEDED

Drill
1/4" Drill Bit
3/8" Allen Wrench
7/8" Open Wrench
5/16" Socket/Wrench
7/16" Socket/Wrench
19mm Socket/Wrench
2-1/4" Hole Saw

Teflon Tape
Measuring Tape
Measuring Square
Channel Lock Pliers
Utility Knife



1. Identify the front, rear, top and bottom of the tank.

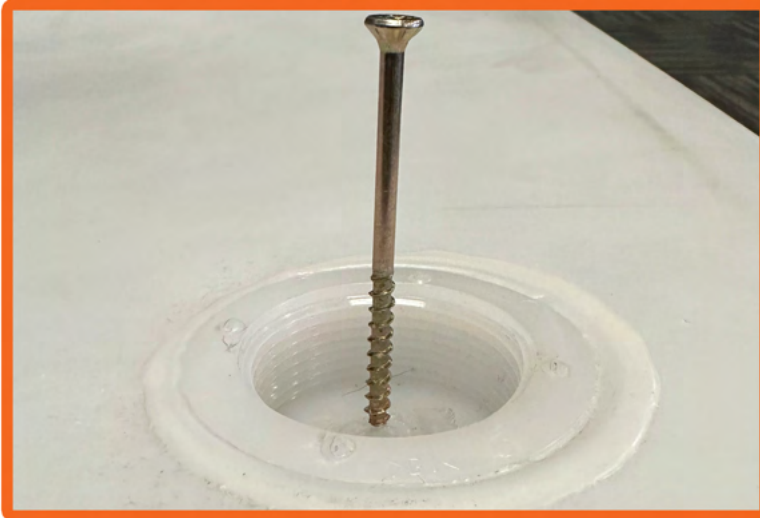
2. Locate the two 1/2" ports and the 1-1/2" port circled in orange.



3. Apply teflon tape to the 1/2" NPT to 1/2" barb elbow fitting and install it into the 1/2" breather port using a 7/8" open wrench.



4. Apply teflon tape to the 1/2" NPT to 3/4" barb elbow fitting and install it into the 1/2" fill/draw port using a 7/8" open wrench. Apply teflon tape to any remaining 1/2" plugs and tighten using a 3/8" allen wrench.



5. Screw in a wood screw into the center of the 1-1/2" gravity fill port fitting membrane.



6. Use a razor blade to cut the fitting membrane out. Hold the wood screw to avoid the membrane from falling in the tank.



7. Apply teflon tape to the 1-1/2" NPT to 1-1/2" barb fitting and install into gravity fill port using channel lock pliers.



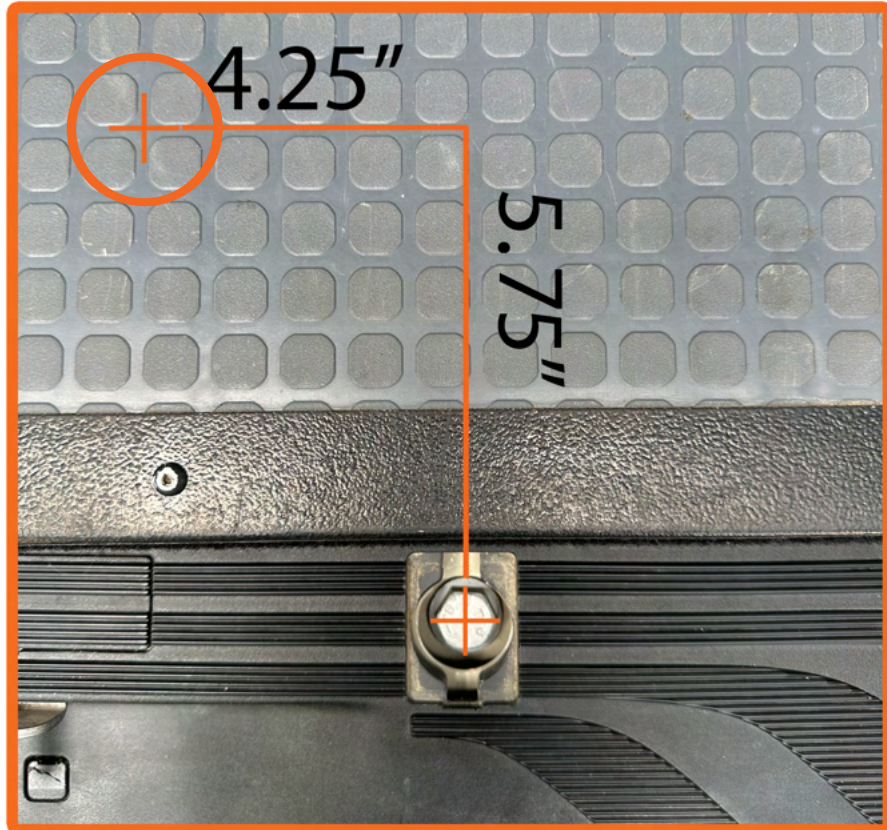
8. Use a flat head screwdriver to remove the spare tire cage bolt covers.



9. Use a 19mm socket/wrench to loosen the spare tire cage hook bolts.



10. Unhook the spare tire cage and drop cage to the floor. Remove spare tire.



11. Use the passenger side spare tire cage hook bolt as the reference point. Use a square to measure from the center of the cage bolt 5.75" up and 4.25" over to the left. Mark the location shown in the circle. Double check the marked location before drilling.

****** Picture not to scale. Do not use flooring (squares) as reference points.******



12. Use a 2-1/4" hole saw and drill a hole through the flooring and the sheet metal.



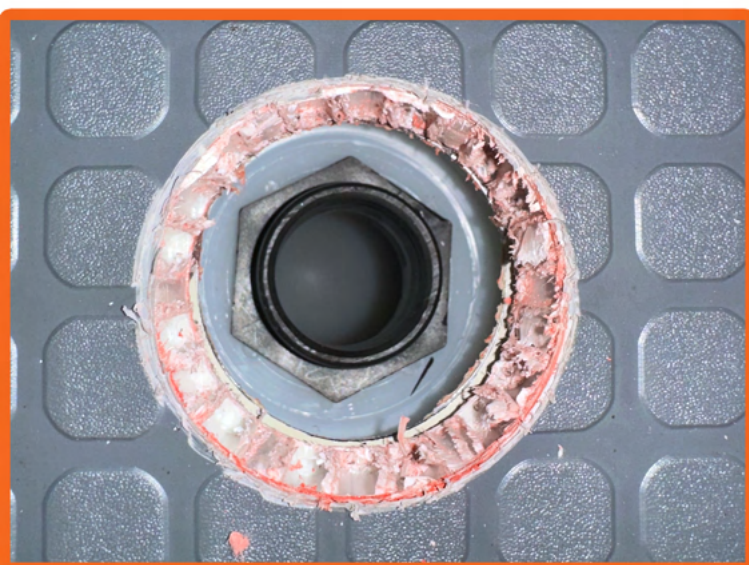
13. File or sand any sharp edges from the sheet metal then add paint to the exposed metal.



14. Install water tank into spare tire cage.



15. Tighten the spare tire cage hooks completely.



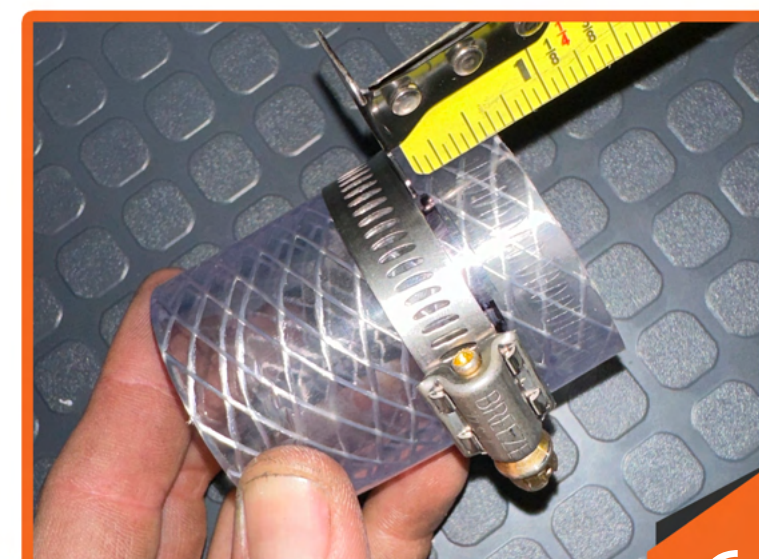
16. The gravity fill port fitting should look as shown above.



17. Install the 2" clear hose without the hose clamp. Make sure the hose is seated completely onto fitting.



18. Install deck filler into 2" clear hose. Measure the gap between the deck filler and floor.



19. Remove deck filler and clear hose. Mark your measurement onto hose.



20. Install hose clamp to marked cut line and with a utility knife cut to final length.



21. Remove water tank and install the clear hose as shown above. Tighten worm drive clamp to 30-35 inch lbs. Position wire ring 1/2" from top end of clear hose.



22. Install 1/2" clear hose to breather port fitting.
No clamp required



23. Install 3/4" clear hose to fill/draw port fitting.
No clamp required



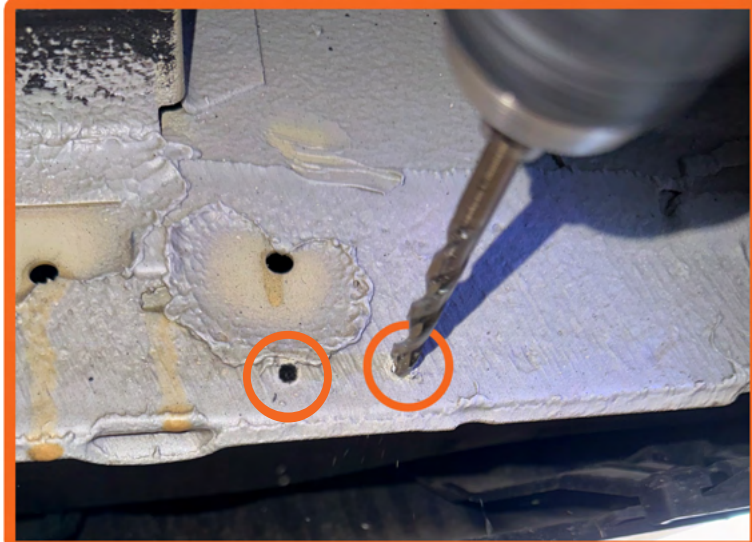
24. Re-install water tank. Torque cage hook bolts to 25-30 ft lbs.



25. Install deck filler using appropriate length screws (screws not supplied).



26. Position the water fitting bracket approx 4" from driver side of hitch. Use bracket to mark the hole location.



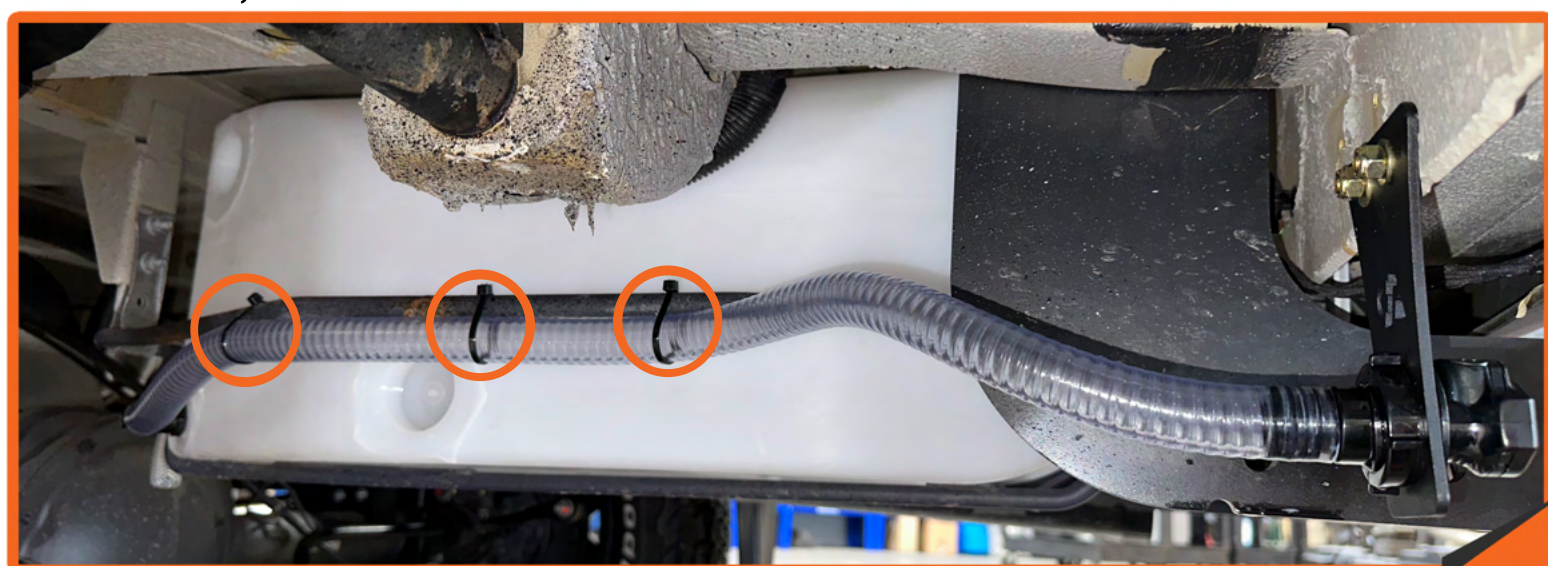
27. Drill two 1/4" holes.



28. Install the 3/4" high flow quick disconnect to bracket and use supplied 1/4" hardware to bolt on bracket assembly as shown.



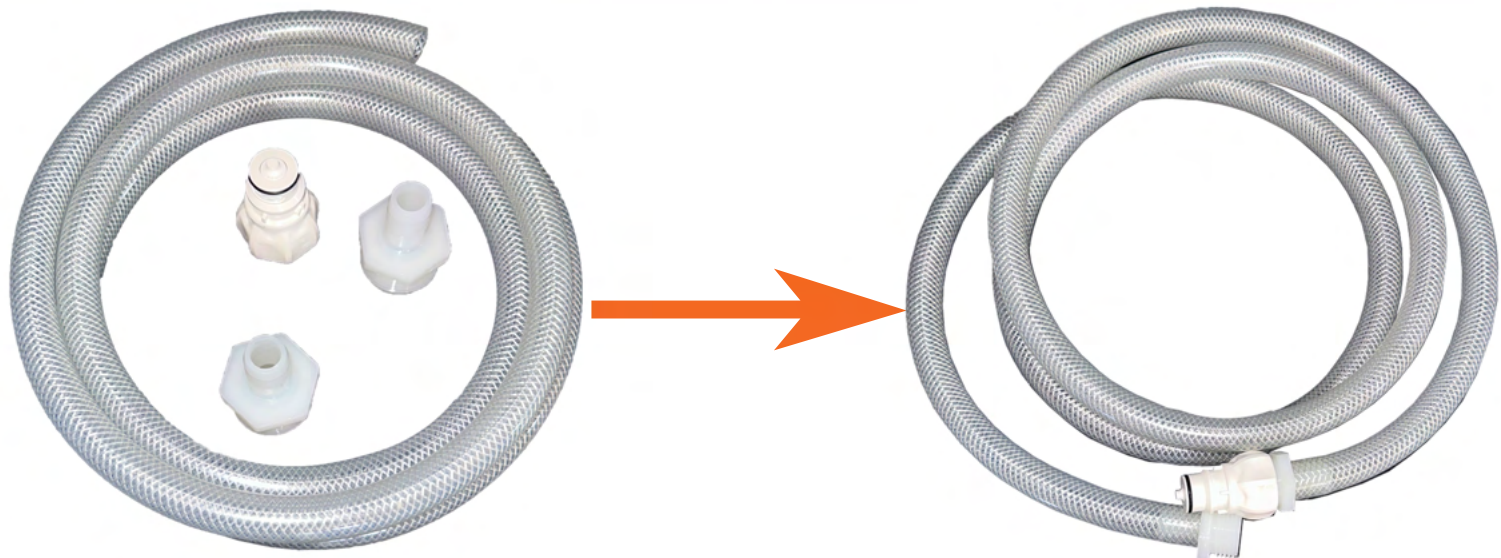
29. Cut the 3/4" clear hose to size. Leave sufficient length to allow for fastening hose to cage.



30. Zip tie the 3/4" hose to water tank cage as shown then install hose onto high flow quick disconnect.
Spray a small amount of Windex to fitting for easier installation



31. Route the 1/2" breather port hose down the front driver side corner of the water tank.. Zip tie the hose to the cage as shown above then cut the hose approx 1" below the bottom of the water tank.



32. Install the GHT x 1/2" barb fittings to both ends of the remaining 1/2" clear hose. Install the GHT to high flow insert to one end of hose assembly.



33. Connect the High Flow Insert to the Quick Disconnect as shown. Connect the opposite end to your RV drinking water hose. Fill water tank and check for leaks.