

RIV STD Valve Fitment

XTD



Shortest counter bore side is .500" or less

X

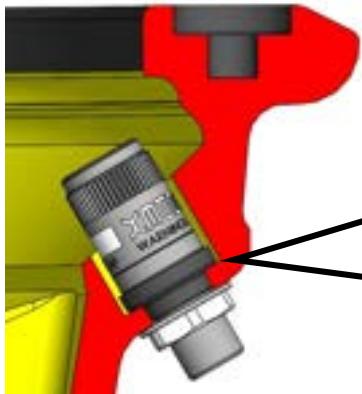


Insure there is enough room to remove cap. Shown is not enough room.

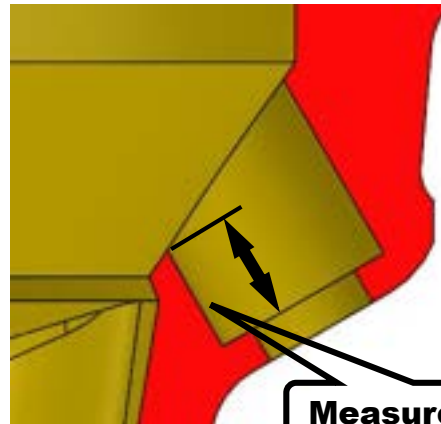
✓



Use of XL is a better fit in this application. .900" or less for XL



By flipping O-ring and seal .100" tab clearance may be gained. Shortest counter bore is now .600" and 1.00" for XL, see page 3



Use tooth pick or other thin material and insert to valve seat. Mark edge of shortest surface with pin. Remove tooth pick and measure.

Measure here.



Typical valve ports. Using .450" ID

If your wheels looks similar to below there is no need to measure. The valve will fit.



Measure if the valve port looks deep



Does not fit AEV wheels with this style of valve protector

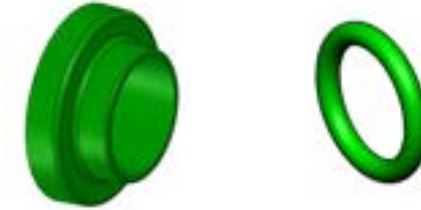


Seal Flip

How to gain .100" by flipping compression seal from outside to inside wheel.

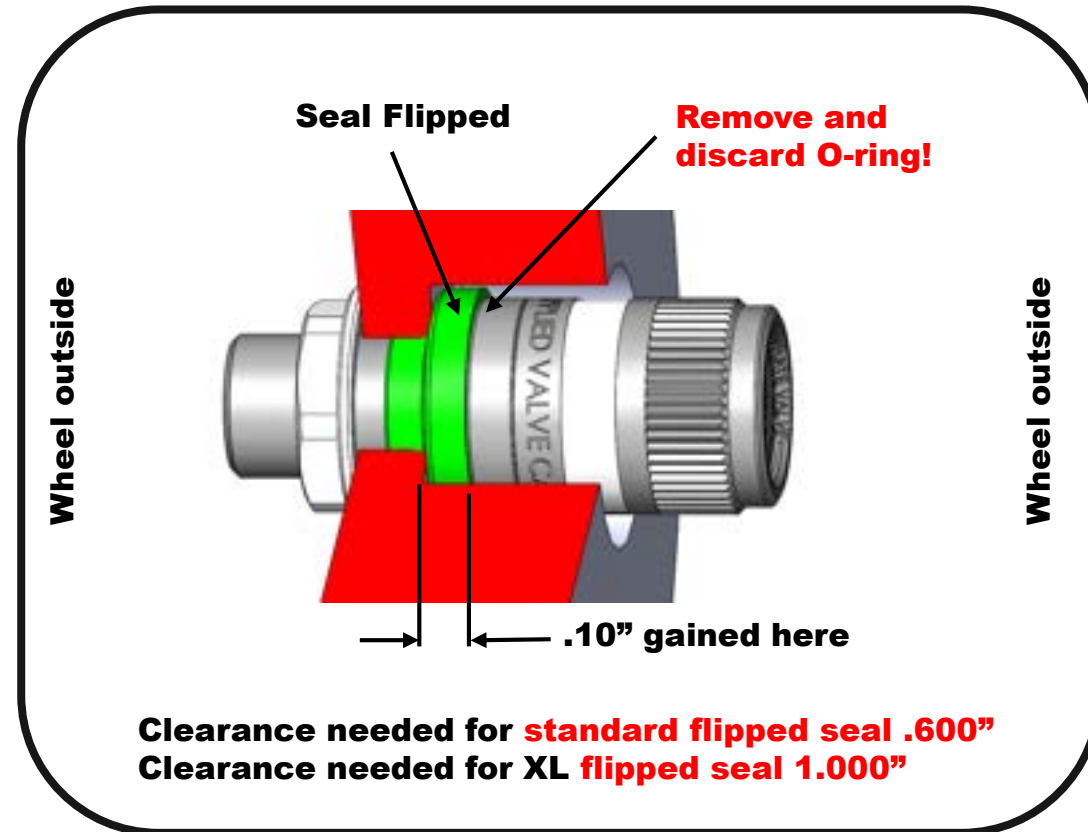
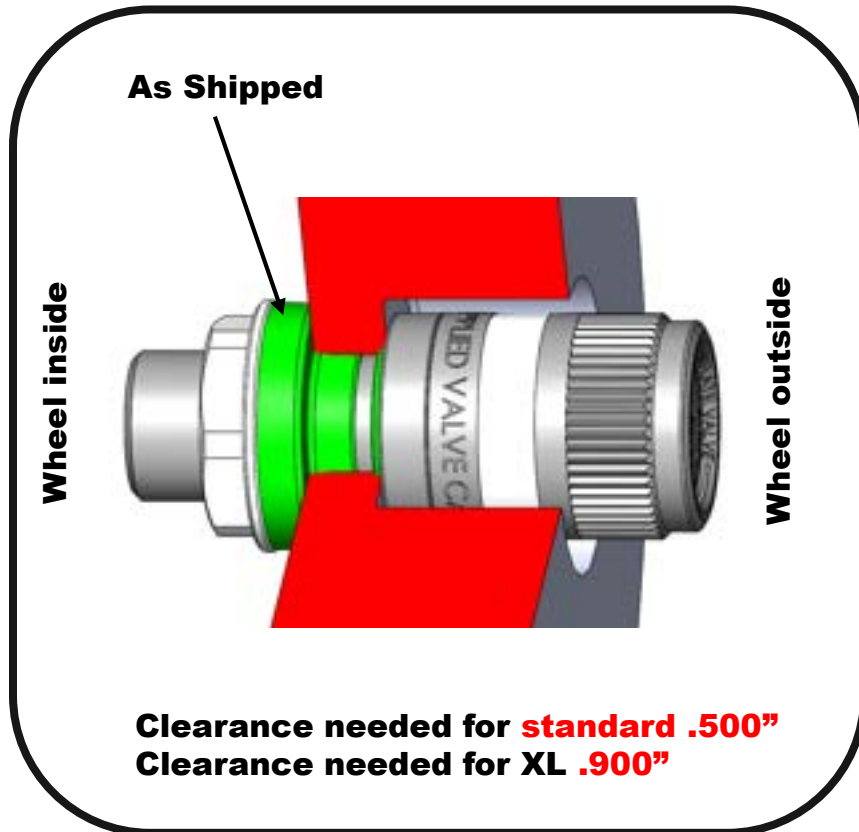
Flip seal only if extra clearance is needed.
This applies to both standard and XL (extra long) valves

Normally black in color:
Colored for reference only

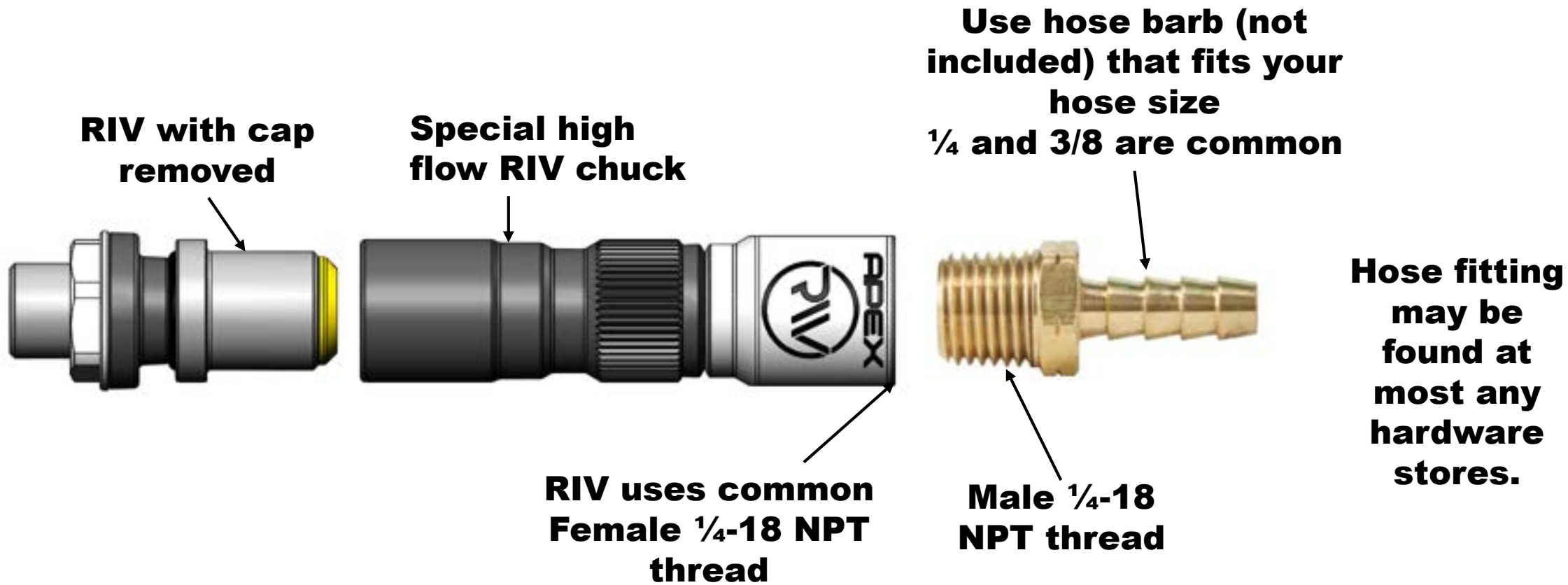


Compression seal

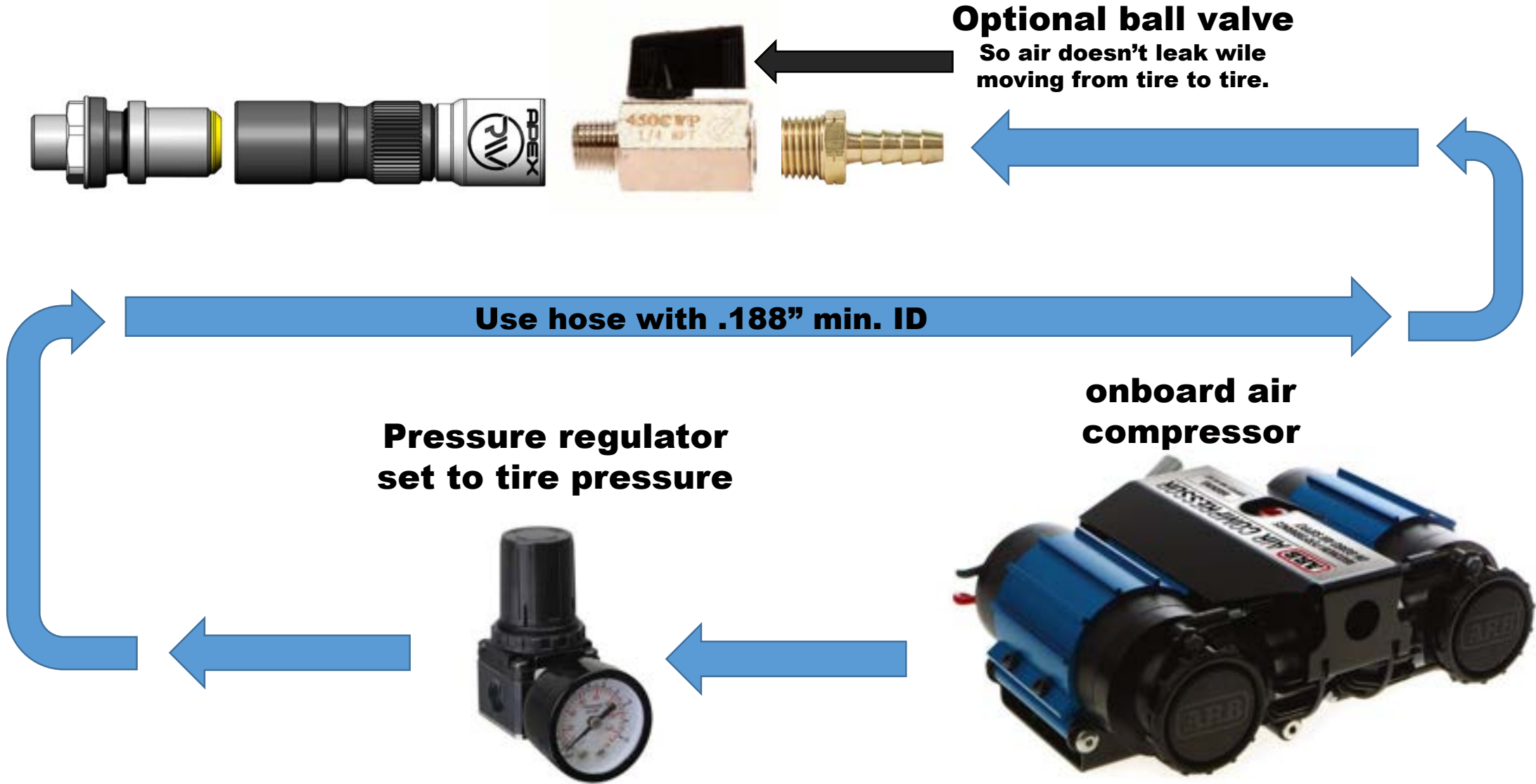
O-ring



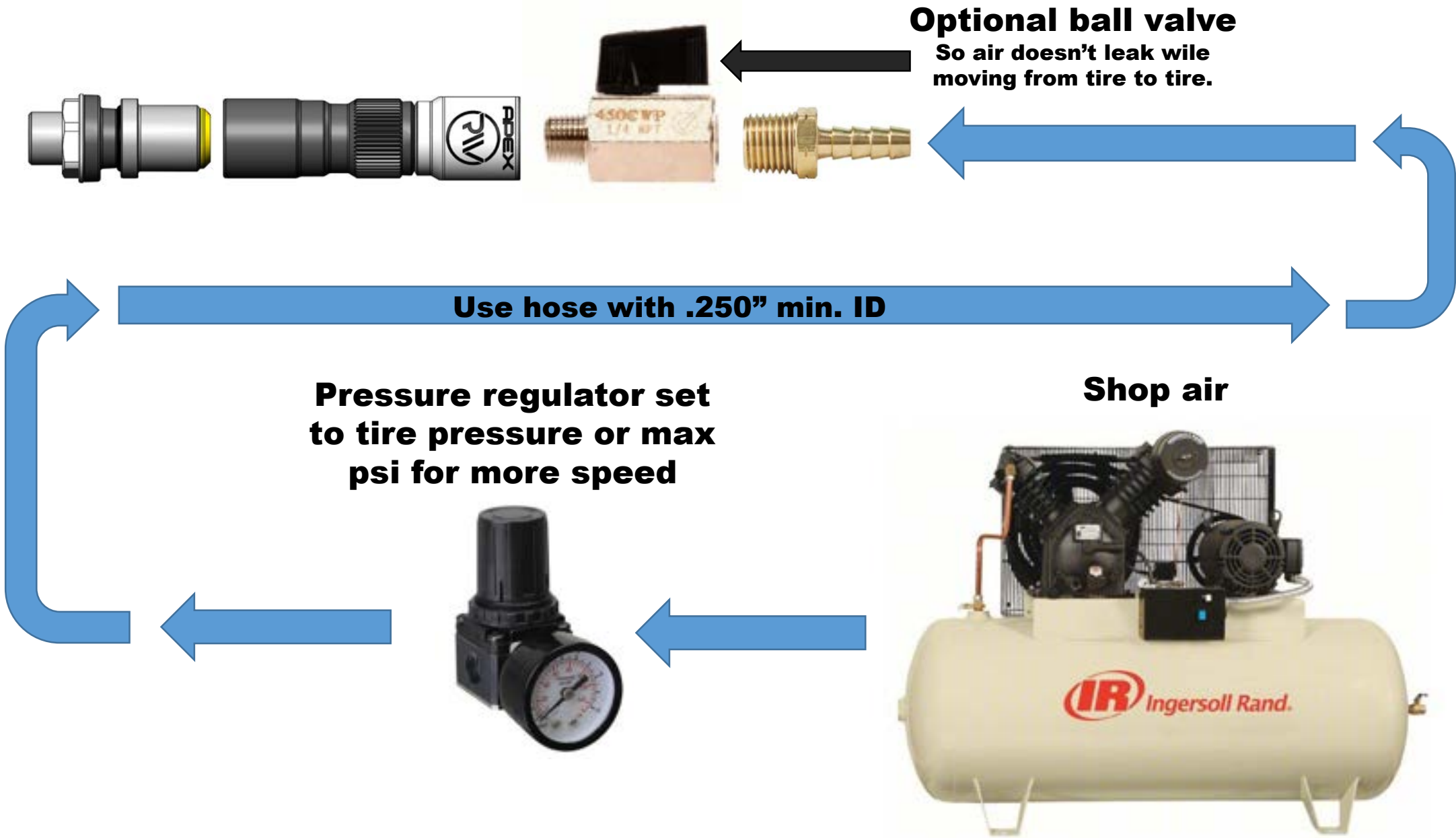
Connection of RIV Chuck



Auto shutoff method for **Onboard** air



Auto shutoff or max flow method for **shop** air



General Notes

- 1) **Cleaning: do not use acids. Typical soaps and detergents are ok.**
- 2) **Viton seals are extremely durable and should not need care.**
- 4) **If there is a small leak from check valve use small Allen wrench to wiggle and push in and out several times to remove dirt.**

**14mm hex
Torque to 18 inch-lbs**



**Torque cap
finger tight
only**