

INSTALLATION GUIDE



**AGILE
OFFROAD**
SMARTER THAN DIRT®

SPRINTER VS30 SLIDING DOOR SPACER KIT

GENERAL INFORMATION

The AO Sprinter VS30 Sliding Door Spacer Kit is designed to give you additional clearance between the rear tire and the sliding door. We recommend the Sliding Door Spacer Kit be installed by an authorized AO dealer (refer to agileoffroad.com to find a dealer near you).

****Read the instructions completely before starting the installation process.****

PARTS INCLUDED

Part # AOR257:

1 x AO Modified Mercedes Hinge

1 x AO Billet Aluminum Door Spacer

2 x M8-1.25 x 30mm Bolts

TOOLS NEEDED

Rag or Towel

Jack Stand

47mm Torx Bit and Wrench

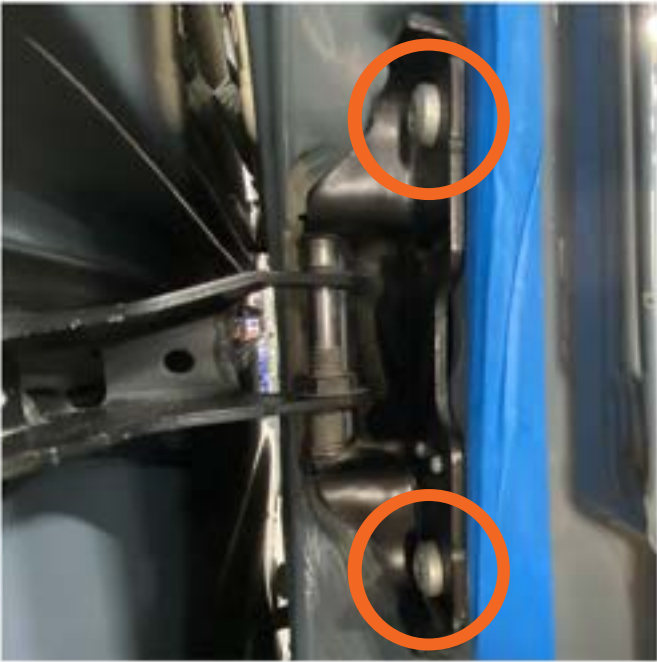
5mm Allen Wrench

Blue Loctite

Masking Tape



Open the sliding door approx. 3/4 of the way open. Use a floor jack to hold the sliding door up at the original height. Use a block of wood and a rag to protect the door from scratches.



Use masking tape to mark the edge of the original hinge. Use a T47 torx bit to remove the two hinge bolts.



Slide the hinge back away from the sliding door then rotate upwards to remove the hinge from the track.



Install the supplied hinge by inserting the upper rollers into the track first then rotating down



Note the two hinge indexing protrusions



Place the AO Door Spacer with the radiused corners towards the sliding door and insure that the spacer has indexed to the door protrusions. Apply a drop of blue loctite to the 2 supplied M8-1.25 x 30mm bolts and bolt hinge and spacer to the door. Check that the spacer and hinge line up with the masking tape line and then fully tighten bolts using a 5mm allen wrench. Remove floor jack and close sliding door. Check that door is properly aligned and fully closes. Re-open door and make sure door slides smoothly. Torque bolts to 16ft lbs.