



Baja Designs LP9/LP6 Pro & Racer Edition Sprinter Wire Harness Installation Guide



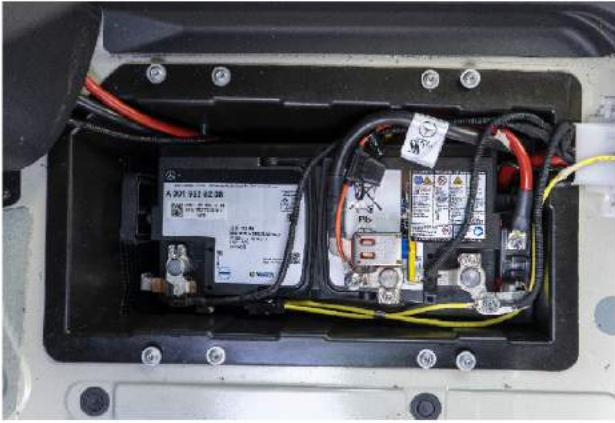


Start by disconnecting the main battery ground under the console.

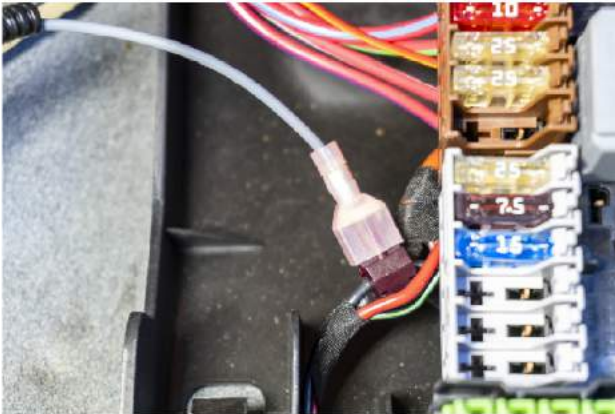


Start light harness installation from inside the van. Mount relays as shown and route switch connector to switch bezel. Route grey wire (pins #4 & #7) to keyed 12v power source.





Access the main battery in the driver side foot well. Install the main power wire on the positive battery terminal post using the supplied fuse holder.



Remove the floor mat and access the fuse box located under the front passenger seat foot well. Connect the grey wire to a KEY HOT power source, using the included wire tap.

*Key Hot circuit vary by year/model. Test for 12V Key Hot before tapping the wire.



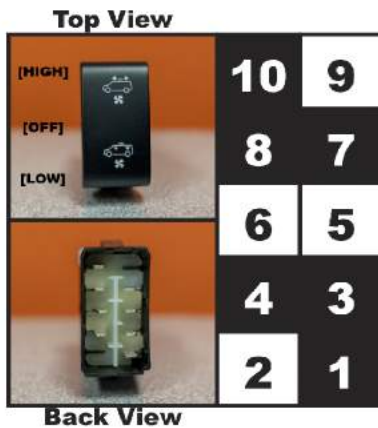
Remove the Torx screws along the bottom & side of the dash to access the back of the blank factory switches. Pop out a switch blank. Install the new switch into the dash.



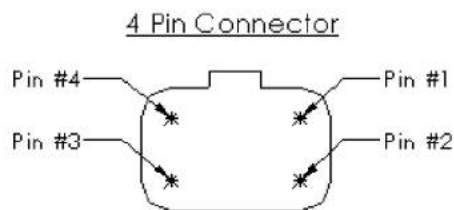
Cut the zip-tie around the boot of the firewall cable pass-through on the driver side. Remove the foam insert inside. Pass the ground and light wires through it. Ground to the factory stud inside the hood. Reinstall the foam insert. Zip-tie the boot closed. Connect the plugs for the lights and secure the wires with zip-ties.

AGILE OFFROAD

Sprinter Dual Position Switch (ON-off-ON) Wiring Diagram



- Pin #10: Ground**
- Pin #8: Load (Low)**
- Pin #7: 12V Keyed Power Source**
- Pin #4: 12V Keyed Power Source**
- Pin #3: Load (High)**
- Pin #1: Switch Icon Illumination**



Use the mating connectors (Deutsch DT06-4S) supplied with LP6/LP9 lights.

LP9/LP6 Pro & Racer Edition

Wiring Instructions

