

AGILE OFFROAD

REVEL Solar Panel Add-On Installation Guide



Package Includes:

- 115-Watt Zamp panel
- 1x1 square cross bar
- (2) solar panel roof rails
- (5) solar panel brackets
- (8) Zamp T-nuts
- Hardware kit

Required Tools:

- 1/2" & 7/16" sockets
- 5/32" Allen wrench
- Small pick



Start by loosening the crossbars and the mounts for any existing roof rack accessories.



Remove the front panel. Unplug it and take it off of the rack. Take this time to clean the panels & roof if necessary.



Remove the (2) brackets on the rear facing edge of the front panel. Attach (1) included solar panel bracket to the panel using existing t-nuts with screws & washers from the hardware kit. Center the bracket on the panel before tightening everything. Install the square cross bar. Install the hardware into the ends of the square crossbar to make it easier to reinstall the solar panel later. Set this panel aside.



If your Revel is equipped with a smaller 100-watt front panel install the square crossbar so that the panel is offset towards the passenger side when installed on the vehicle. This it to keep the satellite antenna uncovered for optimal reception.



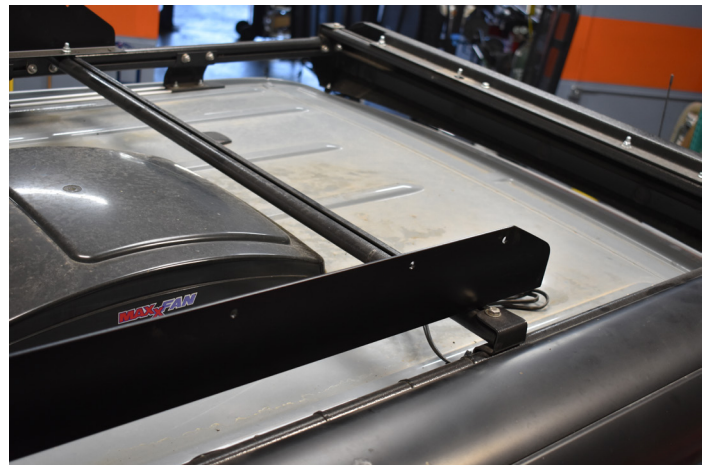


Install (4) included Zamp t-nuts onto each of the shorter sides of the panel included with this kit. Install a solar panel bracket on both short edges of the panel. Center the brackets on the panel (approximately 3.25" from the edge) and tighten. Install the solar panel mounting hardware into the brackets. Set this panel aside.





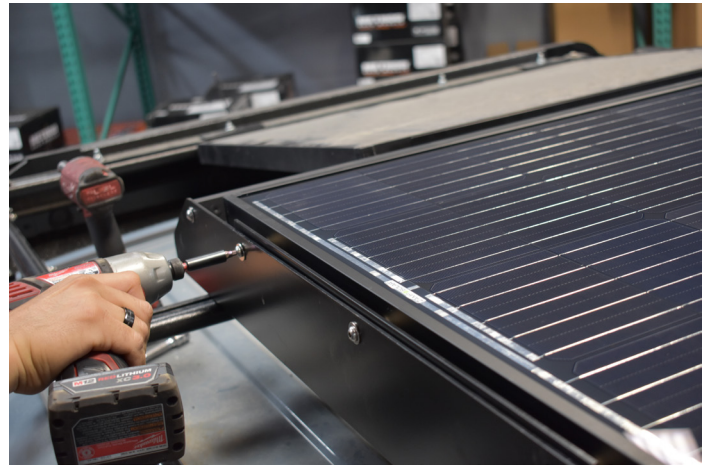
Remove the rear panel from the vehicle. Use a pick to remove the t-nuts from the long sides of the panel. Install (4) t-nuts onto each of the short sides of the panel. Install new solar panel brackets on both short edges of this panel. Center the brackets on the panel (approximately 3.25" from the edge) and tighten. Install the solar panel mounting hardware into the brackets. Set this panel aside.



Install the left & right solar panel roof rails onto the Revel roof rack using the existing hardware. The angle cut edge faces forward. Do not tighten the roof rail hardware yet.



Install the front panel. Start by tightening the hardware on the front facing edge of the panel to the factory roof rack crossbar using the original hardware. Use the included hardware to bolt the square crossbar to the new solar panel roof rails.



Install the new panel in the middle. Install one side at a time. Use the exposed hardware to keep the panel in place while you work on the other side.



The first two panels dictate the alignment of the kit on your roof rack. With the first two panels installed you may now tighten the crossbars and roof rail hardware.



Plug in the middle panel and secure the wire to the crossbar with zip-ties.





Install the rear panel. Verify all roof hardware is tightened. Congratulations your installation is complete.

