



# Scopema Seat Swivel Parking Brake Relocation for 2019+ MB Sprinter



Start by disconnecting the main battery. **Do not reconnect until your installation is complete!** Doing so will cause an unclearable Check Engine code.



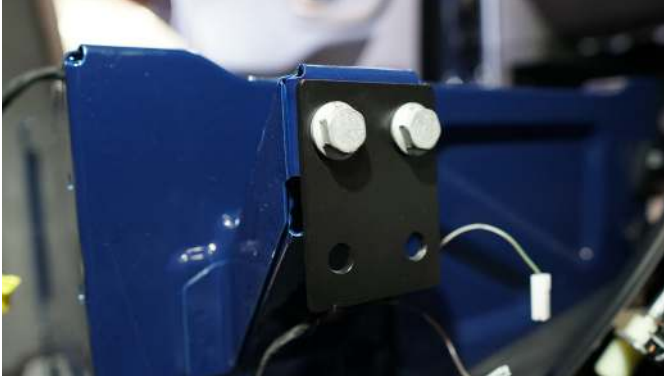
Unplug all connectors from driver seat and unbolt from seat base.



Remove parking brake cover and remove two bolts attaching the brake handle to the seat base. Save this hardware, you will reuse it.



Use TWO washers on EACH factory parking brake bolt. Both washers should be on the side facing toward the seat base.



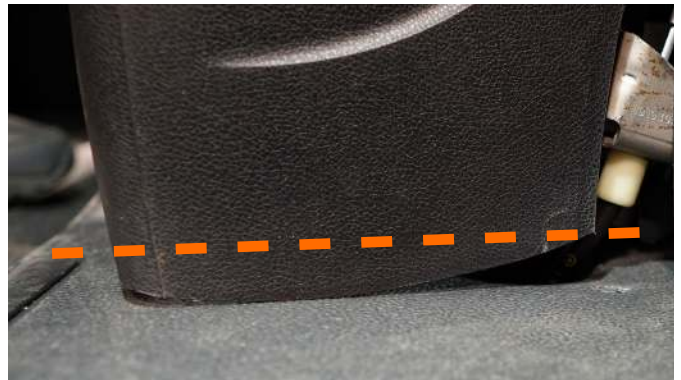
Bolt the supplied relocation bracket to the seat base as shown.



Bolt the parking brake handle to the relocation bracket using supplied hardware as shown. Sandwich the supplied spacers between the brake handle & relocation bracket.



Trim the parking brake cover along the dotted line to ensure it doesn't interfere with the floor during operation.



Trim the parking brake cover along the dotted line to ensure it doesn't interfere with the floor during operation.



Place swivel onto seat base. Be sure to get all 4 bolts started before tightening swivel onto the base.



Route all electrical connections through the center hole to prevent them from being pinched during operation. Re-install the driver seat, tighten seat bracket bolts, and reconnect seat electrical connectors. Test swivel operation. Reconnect main battery. Congratulations, your installation is complete!