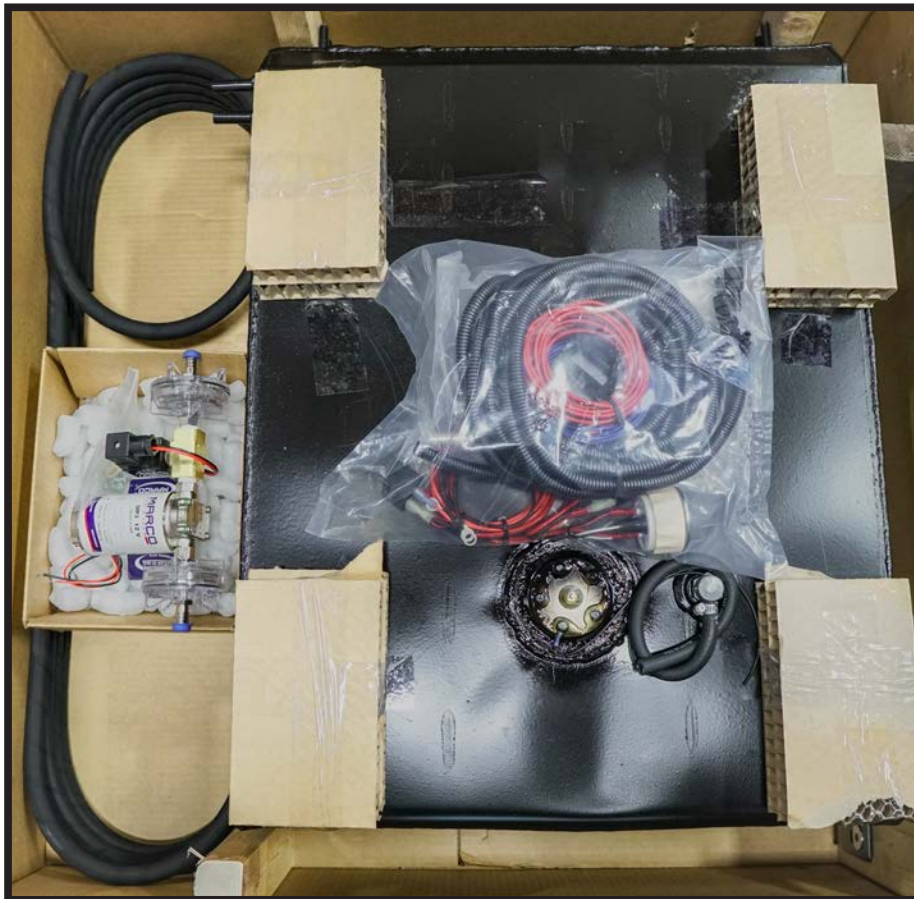


AGILE OFFROAD™

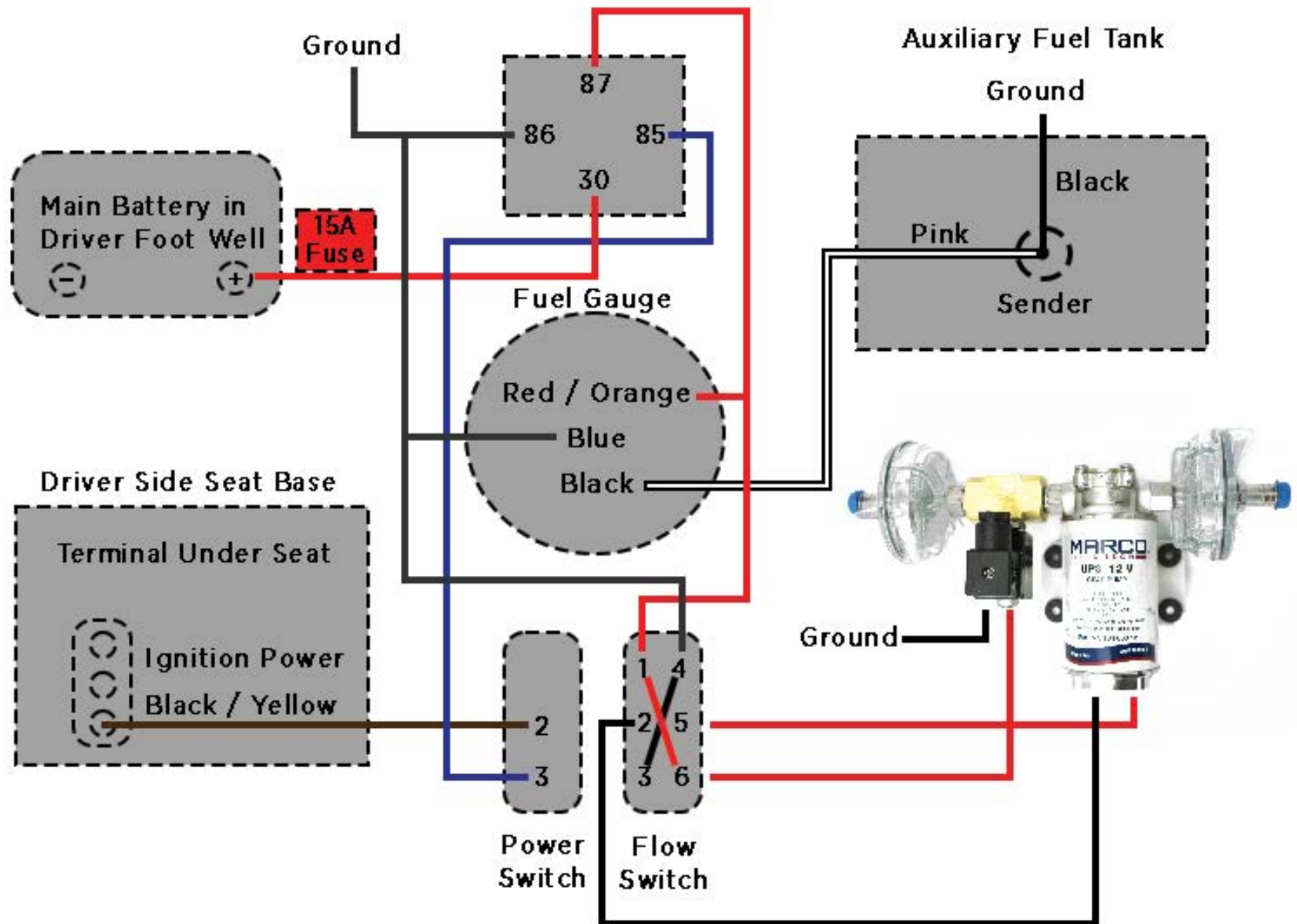
NCV3 Sprinter 28-Gallon Auxiliary Fuel Tank Installation Guide



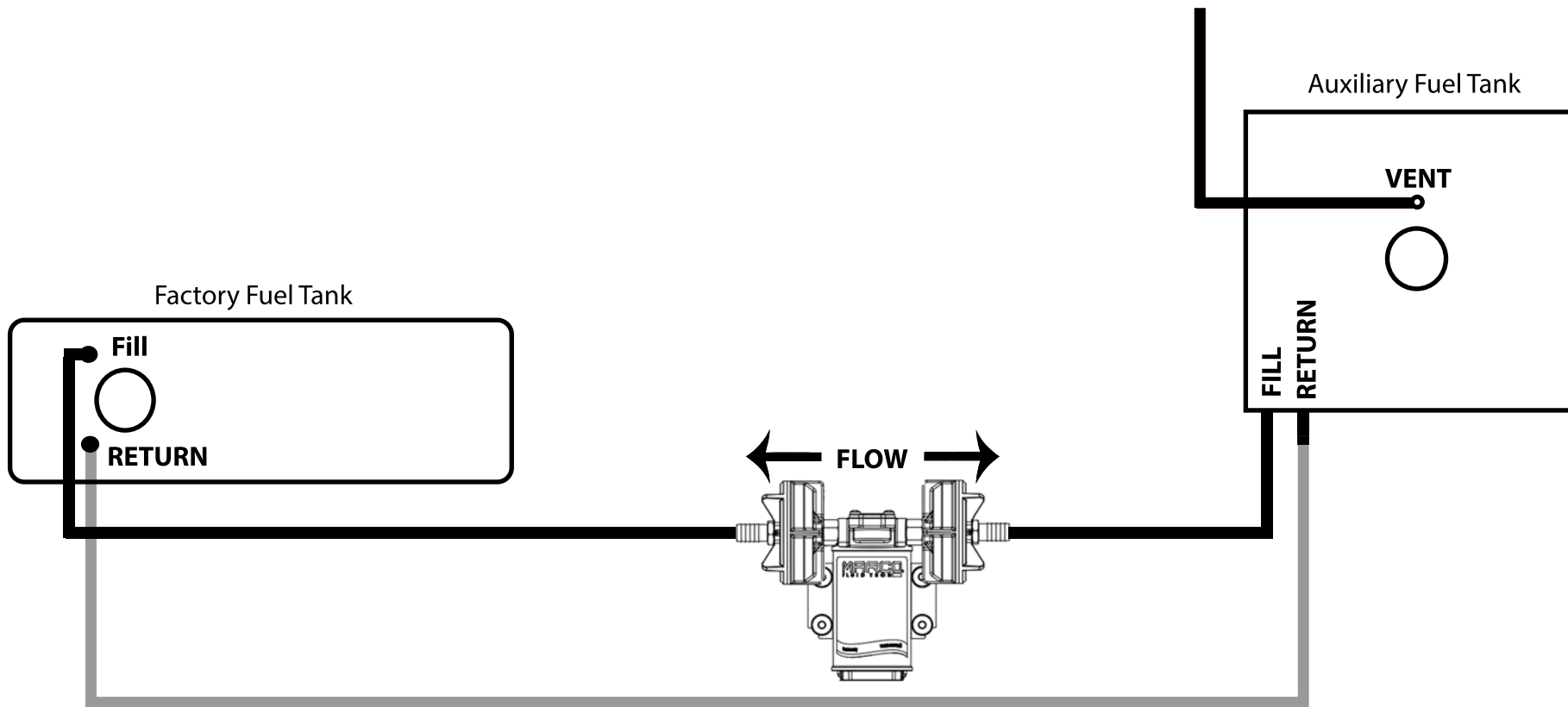
Package Includes:

- 28-Gallon Aluminized Steel Auxiliary Fuel Tank
- Transfer Fuel Pump w/ Anti-Siphon Solenoid
- 30-ft Fuel Line (uncut)
- Factory Tank Pickup Tube, Vent & Bulkhead Fittings
- Auxiliary Tank Fuel Gauge, Power & Flow Switches
- Complete Wiring Kit
- Mounting Hardware

NCV3 28-Gallon Auxiliary Fuel Tank: Wiring Schematic

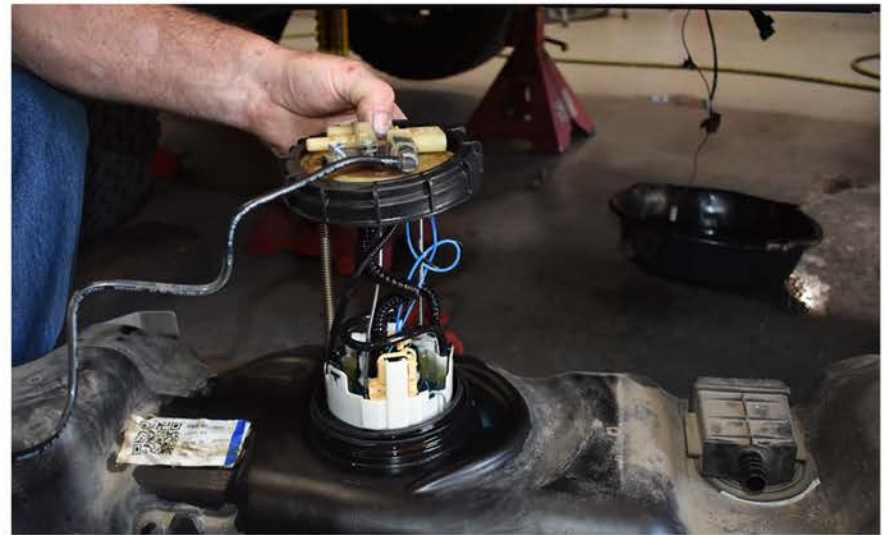


28-Gallon Auxiliary Fuel Tank: Fuel Line Schematic





Remove factory fuel tank from vehicle.



Remove factory fuel pump.



Drill a 1/8" pilot hole 1-1/4" from the threaded inlet. This will be for the filler line.



Drill a second 1/8" pilot hole 1-1/4" from the threaded inlet. This will be for the return line.



Install in-tank filler tube on to the fill side fitting.



Barb Fitting



**-8 Push-On
Hose**

Attach hose to barb fittings and assemble fuel line as pictured in the following photo.



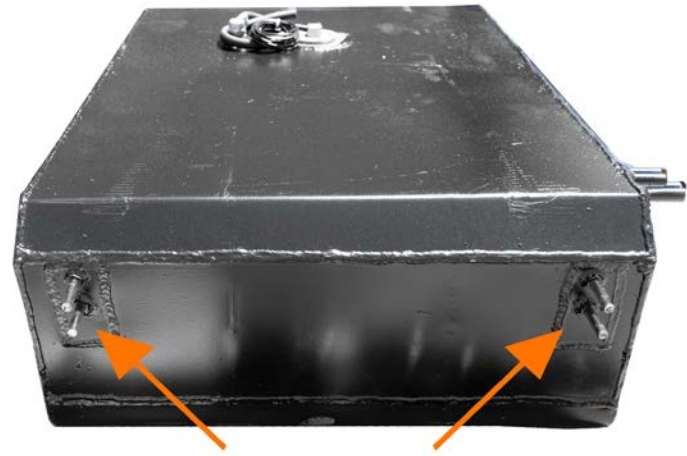
Attach assembled hoses and fittings to factory tank. Use zip ties to keep hose together and route as shown above.



Attach supplied fuel pump to first crossmember behind the factory fuel tank. Mounting location can vary depending on available space.



Rear Mounting Brackets



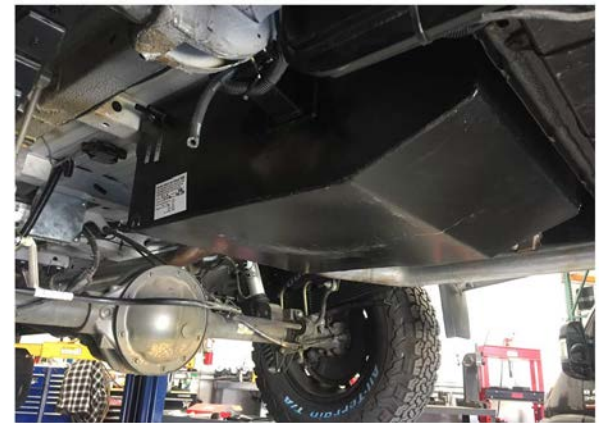
Front Mounting Studs



Remove the spare tire and the cage. Attach fuel tank to the front spare tire brackets.*



Secure the rear facing portion of the tank using the factory spare tire basket hooks.



Secure the tank using 3/8" nuts and washers at the front location

**Enlarging holes for factory Front Mounting Studs might be required to ensure a proper fit.



The auxiliary fuel tank kit comes with fuel gauge and two switches. Switch 1 (labeled Fuel Pump) powers on the system including the fuel gauge. Switch 2 (with the arrows) is a 3-position switch. In the center position, the auxiliary fuel pump is off. In the top position, the pump flows towards the auxiliary tank. In the bottom position, the pump flows towards the factory tank. If the fuel pump is flowing in the opposite direction than what the switch indicates, it may be necessary to change the polarity at the #2 and #5 poles of switch 2.



Above is an example of where you can install the auxiliary fuel gauge and switches. Locations may vary based on space.